

C6 Polyclonal Antibody

Catalog # AP68753

Product Information

Application	WB, IHC-P
Primary Accession	P13671
Reactivity	Human, Rat
Host	Rabbit
Clonality	Polyclonal
Calculated MW	104786

Additional Information

Gene ID	729
Other Names	C6; Complement component C6
Dilution	WB~~Western Blot: 1/500 - 1/2000. Immunohistochemistry: 1/100 - 1/300. ELISA: 1/40000. Not yet tested in other applications. IHC-P~~N/A
Format	Liquid in PBS containing 50% glycerol, 0.5% BSA and 0.09% (W/V) sodium azide.
Storage Conditions	-20°C

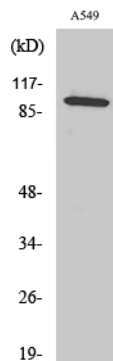
Protein Information

Name	C6 {ECO:0000303 PubMed:2789218, ECO:0000312 HGNC:HGNC:1339}
Function	Component of the membrane attack complex (MAC), a multiprotein complex activated by the complement cascade, which inserts into a target cell membrane and forms a pore, leading to target cell membrane rupture and cell lysis (PubMed: 22267737 , PubMed: 22832194 , PubMed: 26841837 , PubMed: 27052168 , PubMed: 30552328). The MAC is initiated by proteolytic cleavage of C5 into complement C5b in response to the classical, alternative, lectin and GZMK complement pathways (PubMed: 30552328). The complement pathways consist in a cascade of proteins that leads to phagocytosis and breakdown of pathogens and signaling that strengthens the adaptive immune system (PubMed: 30552328). Together with component C5b, involved in MAC complex assembly: complement C5b and C6 associate with the outer leaflet of target cell membrane, reducing the energy for membrane bending (PubMed: 30552328 , PubMed: 32569291).
Cellular Location	Secreted. Target cell membrane; Multi-pass membrane protein. Note=Secreted as soluble protein (PubMed:2808363). Inserts into the cell membrane of target cells (PubMed:30552328, PubMed:31061395)

Background

Constituent of the membrane attack complex (MAC) that plays a key role in the innate and adaptive immune response by forming pores in the plasma membrane of target cells.

Images



Western Blot analysis of various cells using C6 Polyclonal Antibody diluted at 1 : 1000

Please note: All products are 'FOR RESEARCH USE ONLY. NOT FOR USE IN DIAGNOSTIC OR THERAPEUTIC PROCEDURES'.