

# ATP-citrate synthase Polyclonal Antibody

Catalog # AP68598

## Product Information

---

<b>Application</b>	WB, IF
<b>Primary Accession</b>	<a href="#">P53396</a>
<b>Reactivity</b>	Human, Mouse, Rat, Monkey
<b>Host</b>	Rabbit
<b>Clonality</b>	Polyclonal
<b>Calculated MW</b>	120839

## Additional Information

---

<b>Gene ID</b>	47
<b>Other Names</b>	ACLY; ATP-citrate synthase; ATP-citrate; pro-S-)-lyase; ACL; Citrate cleavage enzyme
<b>Dilution</b>	WB~~Western Blot: 1/500 - 1/2000. Immunofluorescence: 1/200 - 1/1000. ELISA: 1/10000. Not yet tested in other applications. IF~~1:50~200
<b>Format</b>	Liquid in PBS containing 50% glycerol, 0.5% BSA and 0.09% (W/V) sodium azide.
<b>Storage Conditions</b>	-20°C

## Protein Information

---

<b>Name</b>	ACLY
<b>Function</b>	Catalyzes the cleavage of citrate into oxaloacetate and acetyl-CoA, the latter serving as common substrate in multiple biochemical reactions in protein, carbohydrate and lipid metabolism.
<b>Cellular Location</b>	Cytoplasm, cytosol.

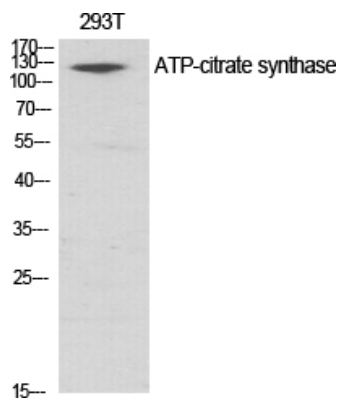
## Background

---

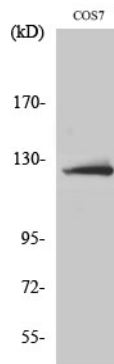
ATP-citrate synthase is the primary enzyme responsible for the synthesis of cytosolic acetyl-CoA in many tissues. Has a central role in de novo lipid synthesis. In nervous tissue it may be involved in the biosynthesis of acetylcholine.

## Images

---



Western Blot analysis of various cells using ATP-citrate synthase Polyclonal Antibody diluted at 1 : 1000



Western Blot analysis of COS7 cells using ATP-citrate synthase Polyclonal Antibody diluted at 1 : 1000

Please note: All products are 'FOR RESEARCH USE ONLY. NOT FOR USE IN DIAGNOSTIC OR THERAPEUTIC PROCEDURES'.