

ApoL2 Polyclonal Antibody

Catalog # AP68461

Product Information

Application	WB, IHC-P, IF
Primary Accession	Q9BQE5
Reactivity	Human
Host	Rabbit
Clonality	Polyclonal
Calculated MW	37078

Additional Information

Gene ID	23780
Other Names	APOL2; Apolipoprotein L2; Apolipoprotein L-II; ApoL-II
Dilution	WB~~Western Blot: 1/500 - 1/2000. Immunohistochemistry: 1/100 - 1/300. Immunofluorescence: 1/200 - 1/1000. ELISA: 1/40000. Not yet tested in other applications. IHC-P~~N/A IF~~1:50~200
Format	Liquid in PBS containing 50% glycerol, 0.5% BSA and 0.09% (W/V) sodium azide.
Storage Conditions	-20°C

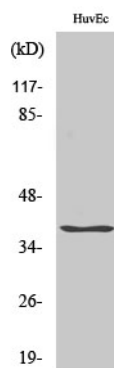
Protein Information

Name	APOL2
Function	May affect the movement of lipids in the cytoplasm or allow the binding of lipids to organelles.
Cellular Location	Cytoplasm.
Tissue Location	Widely expressed; the highest levels are found in lung, thymus, pancreas, placenta, adult brain and prostate; also detected in spleen, liver, kidney, colon, small intestine, uterus, spinal cord, adrenal gland, salivary gland, trachea, mammary gland, skeletal muscle, testis and fetal brain and liver

Background

May affect the movement of lipids in the cytoplasm or allow the binding of lipids to organelles.

Images



Western Blot analysis of various cells using ApoL2 Polyclonal Antibody

Please note: All products are 'FOR RESEARCH USE ONLY. NOT FOR USE IN DIAGNOSTIC OR THERAPEUTIC PROCEDURES'.