

APLNR Polyclonal Antibody

Catalog # AP68448

Product Information

Application	WB, IHC-P, IF, ICC, E
Primary Accession	P35414
Reactivity	Human, Rat, Mouse
Host	Rabbit
Clonality	Polyclonal
Calculated MW	42660

Additional Information

Gene ID	187
Other Names	APLNR; AGTRL1; APJ; Apelin receptor; Angiotensin receptor-like 1; G-protein coupled receptor APJ; G-protein coupled receptor HG11
Dilution	WB~~Western Blot: 1/500 - 1/2000. Immunohistochemistry: 1/100 - 1/300. Immunofluorescence: 1/200 - 1/1000. ELISA: 1/10000. Not yet tested in other applications. IHC-P~~Western Blot: 1/500 - 1/2000. Immunohistochemistry: 1/100 - 1/300. Immunofluorescence: 1/200 - 1/1000. ELISA: 1/10000. Not yet tested in other applications. IF~~1:50~200 ICC~~N/A E~~N/A
Format	Liquid in PBS containing 50% glycerol, 0.5% BSA and 0.09% (W/V) sodium azide.
Storage Conditions	-20°C

Protein Information

Name	APLNR (HGNC:339)
Synonyms	AGTRL1, APJ
Function	G protein-coupled receptor for peptide hormones apelin (APLN) and apelin receptor early endogenous ligand (APELA/ELA), that plays a role in the regulation of normal cardiovascular function and fluid homeostasis (PubMed: 11090199 , PubMed: 22810587 , PubMed: 25639753 , PubMed: 28137936 , PubMed: 35817871 , PubMed: 38428423). When acting as apelin receptor, activates both G(i) protein pathway that inhibits adenylate cyclase activity, and the beta-arrestin pathway that promotes internalization of the receptor (PubMed: 11090199 , PubMed: 25639753 , PubMed: 28137936 , PubMed: 35817871 , PubMed: 38428423). APLNR/APJ also functions as mechanoreceptor that is activated by pathological stimuli in a G-protein-independent fashion to induce beta-arrestin signaling, hence eliciting cardiac hypertrophy (PubMed: 22810587 , PubMed: 38428423).

However, the presence of apelin ligand blunts cardiac hypertrophic induction from APLNR/APJ on response to pathological stimuli (PubMed:[22810587](#), PubMed:[38428423](#)). Plays a key role in early development such as gastrulation, blood vessels formation and heart morphogenesis by acting as a APELA receptor (By similarity). May promote angioblast migration toward the embryonic midline, i.e. the position of the future vessel formation, during vasculogenesis (By similarity). Promotes sinus venosus (SV)-derived endothelial cells migration into the developing heart to promote coronary blood vessel development (By similarity). Also plays a role in various processes in adults such as regulation of blood vessel formation, blood pressure, heart contractility and heart failure (PubMed:[25639753](#), PubMed:[28137936](#)).

Cellular Location

Cell membrane. Note=After exposure to apelin (APLN), internalized from the cell surface into an endosomal recycling compartment, from where it is recycled to the cell membrane (By similarity). After exposure to apelin receptor early endogenous ligand (APELA), internalized from the cell surface into an endosomal recycling compartment, from where it is recycled to the cell membrane (PubMed:25639753). {ECO:0000250|UniProtKB:Q9JHG3, ECO:0000269|PubMed:25639753}

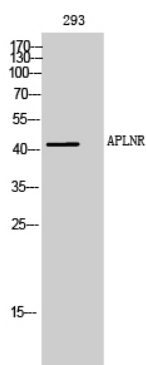
Tissue Location

Expressed in heart, brain, kidney, stomach, spleen, thymus, lung, ovary, small intestine and colon, adipose tissues and pancreas (PubMed:25639753, PubMed:8294032). Expressed in glial cells, astrocytes and neuronal subpopulations (PubMed:8294032). Expressed in embryonic (ESCs) and induced (iPSCs) pluripotent stem cells (PubMed:25639753).

Background

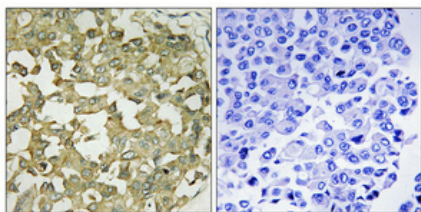
Receptor for apelin receptor early endogenous ligand (APELA) and apelin (APLN) hormones coupled to G proteins that inhibit adenylate cyclase activity (PubMed:[11090199](#), PubMed:[25639753](#), PubMed:[28137936](#)). Plays a key role in early development such as gastrulation, blood vessels formation and heart morphogenesis by acting as a receptor for APELA hormone (By similarity). May promote angioblast migration toward the embryonic midline, i.e. the position of the future vessel formation, during vasculogenesis (By similarity). Promotes sinus venosus (SV)- derived endothelial cells migration into the developing heart to promote coronary blood vessel development (By similarity). Plays also a role in various processes in adults such as regulation of blood vessel formation, blood pressure, heart contractility and heart failure (PubMed:[25639753](#), PubMed:[28137936](#)).

Images



Western Blot analysis of 293 cells using APLNR Polyclonal Antibody

Immunohistochemical analysis of paraffin-embedded Human breast cancer. Antibody was diluted at 1:100(4°,overnight). High-pressure and temperature



Tris-EDTA, pH 8.0 was used for antigen retrieval. Negative control (right) obtained from antibody was pre-absorbed by immunogen peptide.

Please note: All products are 'FOR RESEARCH USE ONLY. NOT FOR USE IN DIAGNOSTIC OR THERAPEUTIC PROCEDURES'.