

Amylin Polyclonal Antibody

Catalog # AP68408

Product Information

Application	WB, IHC-P, IF, ICC, E
Primary Accession	P10997
Reactivity	Human, Rat, Mouse
Host	Rabbit
Clonality	Polyclonal
Calculated MW	9806

Additional Information

Gene ID	3375
Other Names	IAPP; Islet amyloid polypeptide; Amylin; Diabetes-associated peptide; DAP; Insulinoma amyloid peptide
Dilution	WB~~Western Blot: 1/500 - 1/2000. Immunohistochemistry: 1/100 - 1/300. Immunofluorescence: 1/200 - 1/1000. ELISA: 1/10000. Not yet tested in other applications. IHC-P~~N/A IF~~1:50~200 ICC~~N/A E~~N/A
Format	Liquid in PBS containing 50% glycerol, 0.5% BSA and 0.09% (W/V) sodium azide.
Storage Conditions	-20°C

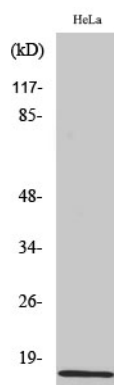
Protein Information

Name	IAPP (HGNC:5329)
Function	Amylin/IAPP is a glucoregulatory peptide hormone that plays an important role in the regulation of energy homeostasis (PubMed: 2690069). Selectively inhibits insulin-stimulated glucose utilization and glycogen deposition in muscle, while not affecting adipocyte glucose metabolism. IAPP function is mediated by the CALCR- RAMPs (AMYRs) receptor complexes (By similarity). Amylin can also bind CALCR receptor in the absence of RAMPs, although it is more selective for AMYRs (By similarity).
Cellular Location	Secreted.

Background

Selectively inhibits insulin-stimulated glucose utilization and glycogen deposition in muscle, while not affecting adipocyte glucose metabolism.

Images



Western Blot analysis of various cells using Amylin
Polyclonal Antibody diluted at 1 : 1000

Please note: All products are 'FOR RESEARCH USE ONLY. NOT FOR USE IN DIAGNOSTIC OR THERAPEUTIC PROCEDURES'.