

# ALS2CR11 Polyclonal Antibody

Catalog # AP68385

## Product Information

---

<b>Application</b>	WB, E
<b>Primary Accession</b>	<a href="#">Q53TS8</a>
<b>Reactivity</b>	Human, Rat, Mouse
<b>Host</b>	Rabbit
<b>Clonality</b>	Polyclonal
<b>Calculated MW</b>	209056

## Additional Information

---

<b>Gene ID</b>	151254
<b>Other Names</b>	ALS2CR11; Amyotrophic lateral sclerosis 2 chromosomal region candidate gene 11 protein
<b>Dilution</b>	WB~~Western Blot: 1/500 - 1/2000. ELISA: 1/40000. Not yet tested in other applications. E~~N/A
<b>Format</b>	Liquid in PBS containing 50% glycerol, 0.5% BSA and 0.09% (W/V) sodium azide.
<b>Storage Conditions</b>	-20°C

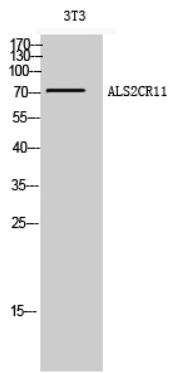
## Protein Information

---

<b>Name</b>	CATSPERT {ECO:0000303   PubMed:34998468, ECO:0000312   HGNC:HGNC:14438}
<b>Function</b>	Auxiliary component of the CatSper complex, a complex involved in sperm cell hyperactivation. Sperm cell hyperactivation is needed for sperm motility which is essential late in the preparation of sperm for fertilization. Required for CatSper complex targeting and trafficking into the quadrilinear nanodomains. Targets the preassembled CatSper complexes to elongating flagella, where it links the channel- carrying vesicles and motor proteins.
<b>Cellular Location</b>	Cell projection, cilium, flagellum membrane {ECO:0000250   UniProtKB:E9Q9F6}. Note=Specifically located in the principal piece of sperm tail. {ECO:0000250   UniProtKB:E9Q9F6}
<b>Tissue Location</b>	Expressed in testis (at protein level).

## Images

---



## Western Blot analysis of 3T3 cells using ALS2CR11 Polyclonal Antibody

Please note: All products are 'FOR RESEARCH USE ONLY. NOT FOR USE IN DIAGNOSTIC OR THERAPEUTIC PROCEDURES'.