

ALMS1 Polyclonal Antibody

Catalog # AP68382

Product Information

Application	WB, IHC-P
Primary Accession	Q8TCU4
Reactivity	Human
Host	Rabbit
Clonality	Polyclonal
Calculated MW	461062

Additional Information

Gene ID	7840
Other Names	ALMS1; KIAA0328; Alstrom syndrome protein 1
Dilution	WB~~Western Blot: 1/500 - 1/2000. Immunohistochemistry: 1/100 - 1/300. ELISA: 1/40000. Not yet tested in other applications. IHC-P~~N/A
Format	Liquid in PBS containing 50% glycerol, 0.5% BSA and 0.09% (W/V) sodium azide.
Storage Conditions	-20°C

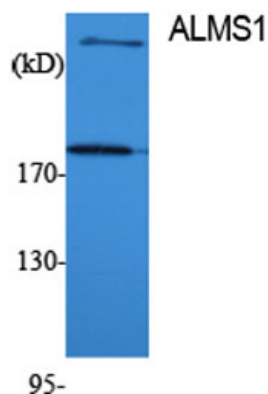
Protein Information

Name	ALMS1
Synonyms	KIAA0328
Function	Involved in PCM1-dependent intracellular transport. Required, directly or indirectly, for the localization of NCAPD2 to the proximal ends of centrioles. Required for proper formation and/or maintenance of primary cilia (PC), microtubule-based structures that protrude from the surface of epithelial cells.
Cellular Location	Cytoplasm. Cytoplasm, cytoskeleton, microtubule organizing center, centrosome. Cytoplasm, cytoskeleton, cilium basal body. Cytoplasm, cytoskeleton, spindle pole Note=Associated with centrosomes and basal bodies at the base of primary cilia. Specifically locates to the proximal ends of centrioles and basal bodies. Colocalizes partially with NCAPD2 at these sites During mitosis localizes to both spindle poles
Tissue Location	Expressed in all tissues tested including adipose and pancreas. Expressed by beta-cells of the islets in the pancreas (at protein level).

Background

Involved in PCM1-dependent intracellular transport. Required, directly or indirectly, for the localization of NCAPD2 to the proximal ends of centrioles. Required for proper formation and/or maintenance of primary cilia (PC), microtubule-based structures that protrude from the surface of epithelial cells.

Images



Western Blot analysis of various cells using ALMS1 Polyclonal Antibody

Please note: All products are 'FOR RESEARCH USE ONLY. NOT FOR USE IN DIAGNOSTIC OR THERAPEUTIC PROCEDURES'.