

# AChE Polyclonal Antibody

Catalog # AP68261

## Product Information

---

<b>Application</b>	WB, IHC-P, IF, ICC, E
<b>Primary Accession</b>	<a href="#">P22303</a>
<b>Reactivity</b>	Human, Mouse, Rat
<b>Host</b>	Rabbit
<b>Clonality</b>	Polyclonal
<b>Calculated MW</b>	67796

## Additional Information

---

<b>Gene ID</b>	43
<b>Other Names</b>	ACHE; Acetylcholinesterase; AChE
<b>Dilution</b>	WB~~Western Blot: 1/500 - 1/2000. Immunohistochemistry: 1/100 - 1/300. ELISA: 1/40000. Not yet tested in other applications. IHC-P~~N/A IF~~1:50~200 ICC~~N/A E~~N/A
<b>Format</b>	Liquid in PBS containing 50% glycerol, 0.5% BSA and 0.09% (W/V) sodium azide.
<b>Storage Conditions</b>	-20°C

## Protein Information

---

<b>Name</b>	ACHE ( <a href="#">HGNC:108</a> )
<b>Function</b>	Hydrolyzes rapidly the acetylcholine neurotransmitter released into the synaptic cleft allowing to terminate the signal transduction at the neuromuscular junction. Role in neuronal apoptosis.
<b>Cellular Location</b>	Synapse. Secreted. Cell membrane; Peripheral membrane protein [Isoform H]: Cell membrane; Lipid- anchor, GPI-anchor; Extracellular side
<b>Tissue Location</b>	Isoform H is highly expressed in erythrocytes.

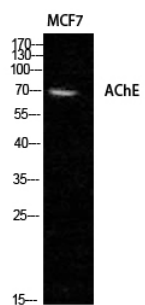
## Background

---

Terminates signal transduction at the neuromuscular junction by rapid hydrolysis of the acetylcholine released into the synaptic cleft. Role in neuronal apoptosis.

## Images

---



Western Blot analysis of MCF7 cells using AChE Polyclonal Antibody diluted at 1 : 1000

Please note: All products are 'FOR RESEARCH USE ONLY. NOT FOR USE IN DIAGNOSTIC OR THERAPEUTIC PROCEDURES'.