

# 9G8 Polyclonal Antibody

Catalog # AP68211

## Product Information

---

<b>Application</b>	WB, IHC-P, IF, ICC, E
<b>Primary Accession</b>	<a href="#">Q16629</a>
<b>Reactivity</b>	Human, Mouse
<b>Host</b>	Rabbit
<b>Clonality</b>	Polyclonal
<b>Calculated MW</b>	27367

## Additional Information

---

<b>Gene ID</b>	6432
<b>Other Names</b>	SRSF7; SFRS7; Serine/arginine-rich splicing factor 7; Splicing factor 9G8; Splicing factor; arginine/serine-rich 7
<b>Dilution</b>	WB~~Western Blot: 1/500 - 1/2000. Immunohistochemistry: 1/100 - 1/300. ELISA: 1/40000. Not yet tested in other applications. IHC-P~~N/A IF~~1:50~200 ICC~~N/A E~~N/A
<b>Format</b>	Liquid in PBS containing 50% glycerol, 0.5% BSA and 0.09% (W/V) sodium azide.
<b>Storage Conditions</b>	-20°C

## Protein Information

---

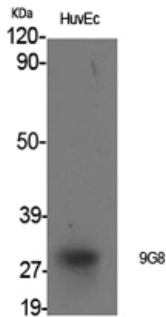
<b>Name</b>	SRSF7
<b>Synonyms</b>	SFRS7
<b>Function</b>	Required for pre-mRNA splicing. Can also modulate alternative splicing in vitro. Represses the splicing of MAPT/Tau exon 10. May function as export adapter involved in mRNA nuclear export such as of histone H2A. Binds mRNA which is thought to be transferred to the NXF1- NXT1 heterodimer for export (TAP/NXF1 pathway); enhances NXF1-NXT1 RNA- binding activity. RNA-binding is semi-sequence specific.
<b>Cellular Location</b>	Nucleus. Cytoplasm
<b>Tissue Location</b>	Brain, liver, kidney and lung.

## Background

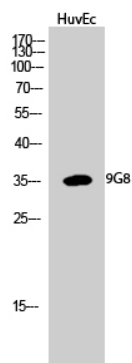
---

Required for pre-mRNA splicing. Can also modulate alternative splicing in vitro. Represses the splicing of MAPT/Tau exon 10. May function as export adapter involved in mRNA nuclear export such as of histone H2A. Binds mRNA which is thought to be transferred to the NXF1-NXT1 heterodimer for export (TAP/NXF1 pathway); enhances NXF1-NXT1 RNA-binding activity. RNA-binding is semi-sequence specific.

## Images



Western Blot analysis of various cells using 9G8 Polyclonal Antibody cells nucleus extracted by Minute TM Cytoplasmic and Nuclear Fractionation kit (SC-003, Inventbiotech, MN, USA).



Western Blot analysis of HuvEc cells using 9G8 Polyclonal Antibody cells nucleus extracted by Minute TM Cytoplasmic and Nuclear Fractionation kit (SC-003, Inventbiotech, MN, USA).

Please note: All products are 'FOR RESEARCH USE ONLY. NOT FOR USE IN DIAGNOSTIC OR THERAPEUTIC PROCEDURES'.