

# MLK3 (phospho Ser674) Polyclonal Antibody

Catalog # AP68134

## Product Information

---

Application	WB
Primary Accession	<a href="#">Q16584</a>
Reactivity	Human, Mouse, Rat
Host	Rabbit
Clonality	Polyclonal
Calculated MW	92688

## Additional Information

---

Gene ID	4296
Other Names	MAP3K11; MLK3; PTK1; SPRK; Mitogen-activated protein kinase kinase 11; Mixed lineage kinase 3; Src-homology 3 domain-containing proline-rich kinase
Dilution	WB~~Western Blot: 1/500 - 1/2000. ELISA: 1/5000. Not yet tested in other applications.
Format	Liquid in PBS containing 50% glycerol, 0.5% BSA and 0.09% (W/V) sodium azide.
Storage Conditions	-20°C

## Protein Information

---

Name	MAP3K11 ( <a href="#">HGNC:6850</a> )
Function	Activates the JUN N-terminal pathway. Required for serum- stimulated cell proliferation and for mitogen and cytokine activation of MAPK14 (p38), MAPK3 (ERK) and MAPK8 (JNK1) through phosphorylation and activation of MAP2K4/MKK4 and MAP2K7/MKK7. Plays a role in mitogen- stimulated phosphorylation and activation of BRAF, but does not phosphorylate BRAF directly. Influences microtubule organization during the cell cycle.
Cellular Location	Cytoplasm, cytoskeleton, microtubule organizing center, centrosome. Note=Location is cell cycle dependent
Tissue Location	Expressed in a wide variety of normal and neoplastic tissues including fetal lung, liver, heart and kidney, and adult lung, liver, heart, kidney, placenta, skeletal muscle, pancreas and brain.

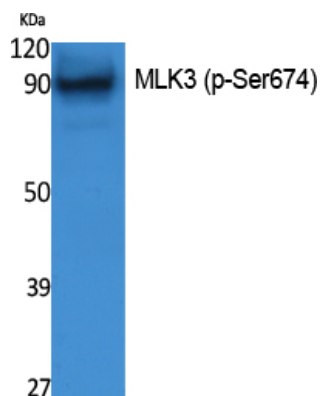
## Background

---

Activates the JUN N-terminal pathway. Required for serum-stimulated cell proliferation and for mitogen and cytokine activation of MAPK14 (p38), MAPK3 (ERK) and MAPK8 (JNK1) through phosphorylation and activation of MAP2K4/MKK4 and MAP2K7/MKK7. Plays a role in mitogen-stimulated phosphorylation and activation of BRAF, but does not phosphorylate BRAF directly. Influences microtubule organization during the cell cycle.

## Images

---



Western Blot analysis of extracts from NIH-3T3 cells, using Phospho-MLK3 (S674) Polyclonal Antibody.

Please note: All products are 'FOR RESEARCH USE ONLY. NOT FOR USE IN DIAGNOSTIC OR THERAPEUTIC PROCEDURES'.