

HIRA (phospho Thr555) Polyclonal Antibody

Catalog # AP68118

Product Information

Application	IHC-P, IF
Primary Accession	P54198
Reactivity	Human, Mouse
Host	Rabbit
Clonality	Polyclonal
Calculated MW	111835

Additional Information

Gene ID	7290
Other Names	HIRA; DGCR1; HIR; TUPLE1; Protein HIRA; TUP1-like enhancer of split protein 1
Dilution	IHC-P~~Immunohistochemistry: 1/100 - 1/300. Immunofluorescence: 1/200 - 1/1000. ELISA: 1/10000. Not yet tested in other applications. IF~~1:50~200
Format	Liquid in PBS containing 50% glycerol, 0.5% BSA and 0.09% (W/V) sodium azide.
Storage Conditions	-20°C

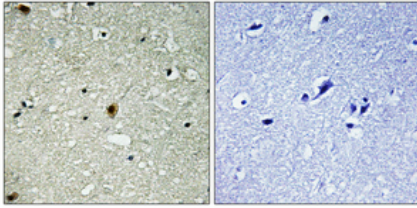
Protein Information

Name	HIRA
Synonyms	DGCR1, HIR, TUPLE1
Function	Cooperates with ASF1A to promote replication-independent chromatin assembly. Required for the periodic repression of histone gene transcription during the cell cycle. Required for the formation of senescence-associated heterochromatin foci (SAHF) and efficient senescence-associated cell cycle exit.
Cellular Location	Nucleus. Nucleus, PML body. Note=Primarily, though not exclusively, localized to the nucleus. Localizes to PML bodies immediately prior to onset of senescence
Tissue Location	Expressed at high levels in kidney, pancreas and skeletal muscle and at lower levels in brain, heart, liver, lung, and placenta.

Background

Cooperates with ASF1A to promote replication-independent chromatin assembly. Required for the periodic repression of histone gene transcription during the cell cycle. Required for the formation of senescence-associated heterochromatin foci (SAHF) and efficient senescence-associated cell cycle exit.

Images



Immunohistochemical analysis of paraffin-embedded Human brain. Antibody was diluted at 1:100(4°,overnight). High-pressure and temperature Tris-EDTA,pH8.0 was used for antigen retrieval. Negative contrl (right) obtained from antibody was pre-absorbed by immunogen peptide.

Please note: All products are 'FOR RESEARCH USE ONLY. NOT FOR USE IN DIAGNOSTIC OR THERAPEUTIC PROCEDURES'.