

MAP-4 (phospho Ser696) Polyclonal Antibody

Catalog # AP68090

Product Information

Application	IHC-P, IF, ICC, E
Primary Accession	P27816
Reactivity	Human, Mouse, Rat
Host	Rabbit
Clonality	Polyclonal
Calculated MW	121005

Additional Information

Gene ID	4134
Other Names	MAP4; Microtubule-associated protein 4; MAP-4
Dilution	IHC-P~~Immunohistochemistry: 1/100 - 1/300. Immunofluorescence: 1/200 - 1/1000. ELISA: 1/5000. Not yet tested in other applications. IF~~1:50~200 ICC~~N/A E~~N/A
Format	Liquid in PBS containing 50% glycerol, 0.5% BSA and 0.09% (W/V) sodium azide.
Storage Conditions	-20°C

Protein Information

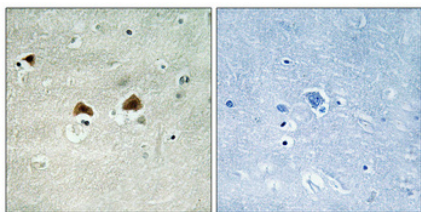
Name	MAP4
Function	Non-neuronal microtubule-associated protein. Promotes microtubule assembly.
Cellular Location	Cytoplasm, cytoskeleton. Cytoplasm, cytoskeleton, microtubule organizing center. Note=Recruitment to microtubule is inhibited by microtubules polyglutamylolation

Background

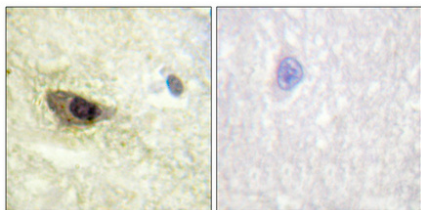
Non-neuronal microtubule-associated protein. Promotes microtubule assembly.

Images

Immunohistochemical analysis of paraffin-embedded



Human brain. Antibody was diluted at 1:100(4°,overnight). High-pressure and temperature Tris-EDTA,pH8.0 was used for antigen retrieval. Negative contrl (right) obtaned from antibody was pre-absorbed by immunogen peptide.



Immunohistochemical analysis of paraffin-embedded Human brain. Antibody was diluted at 1:100(4°,overnight). High-pressure and temperature Tris-EDTA,pH8.0 was used for antigen retrieval. Negative contrl (right) obtaned from antibody was pre-absorbed by immunogen peptide.

Please note: All products are 'FOR RESEARCH USE ONLY. NOT FOR USE IN DIAGNOSTIC OR THERAPEUTIC PROCEDURES'.