

# Bim (phospho Ser59) Polyclonal Antibody

Catalog # AP67997

## Product Information

---

<b>Application</b>	IHC-P, IF, ICC, E
<b>Primary Accession</b>	<a href="#">O43521</a>
<b>Reactivity</b>	Human, Mouse, Rat
<b>Host</b>	Rabbit
<b>Clonality</b>	Polyclonal
<b>Calculated MW</b>	22171

## Additional Information

---

<b>Gene ID</b>	10018
<b>Other Names</b>	BCL2L11; BIM; Bcl-2-like protein 11; Bcl2-L-11; Bcl2-interacting mediator of cell death
<b>Dilution</b>	IHC-P~~Immunohistochemistry: 1/100 - 1/300. ELISA: 1/40000. Not yet tested in other applications. IF~~1:50~200 ICC~~N/A E~~N/A
<b>Format</b>	Liquid in PBS containing 50% glycerol, 0.5% BSA and 0.09% (W/V) sodium azide.
<b>Storage Conditions</b>	-20°C

## Protein Information

---

<b>Name</b>	BCL2L11
<b>Synonyms</b>	BIM
<b>Function</b>	Induces apoptosis and anoikis. Isoform BimL is more potent than isoform BimEL. Isoform Bim-alpha1, isoform Bim-alpha2 and isoform Bim-alpha3 induce apoptosis, although less potent than isoform BimEL, isoform BimL and isoform BimS. Isoform Bim-gamma induces apoptosis. Isoform Bim-alpha3 induces apoptosis possibly through a caspase- mediated pathway. Isoform BimAC and isoform BimABC lack the ability to induce apoptosis.
<b>Cellular Location</b>	Endomembrane system; Peripheral membrane protein. Note=Associated with intracytoplasmic membranes. [Isoform BimL]: Mitochondrion. [Isoform Bim-alpha1]: Mitochondrion.
<b>Tissue Location</b>	Isoform BimEL, isoform BimL and isoform BimS are the predominant isoforms and are widely expressed with tissue-specific variation. Isoform Bim-gamma is most abundantly expressed in small intestine and colon, and in lower levels in spleen, prostate, testis, heart, liver and kidney.

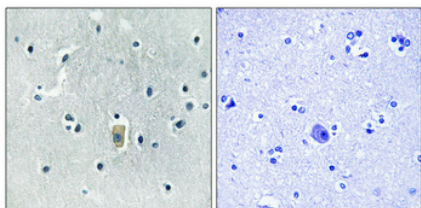
## Background

---

Induces apoptosis and anoikis. Isoform BimL is more potent than isoform BimEL. Isoform Bim-alpha1, isoform Bim-alpha2 and isoform Bim-alpha3 induce apoptosis, although less potent than isoform BimEL, isoform BimL and isoform BimS. Isoform Bim-gamma induces apoptosis. Isoform Bim-alpha3 induces apoptosis possibly through a caspase-mediated pathway. Isoform BimAC and isoform BimABC lack the ability to induce apoptosis.

## Images

---



Immunohistochemical analysis of paraffin-embedded Human brain. Antibody was diluted at 1:100(4°,overnight). High-pressure and temperature Tris-EDTA,pH8.0 was used for antigen retrieval. Negative contrl (right) obtained from antibody was pre-absorbed by immunogen peptide.

Please note: All products are 'FOR RESEARCH USE ONLY. NOT FOR USE IN DIAGNOSTIC OR THERAPEUTIC PROCEDURES'.