

HAND1 (phospho Ser98) Polyclonal Antibody

Catalog # AP67930

Product Information

Application	IHC-P, IF, ICC, E
Primary Accession	O96004
Reactivity	Human, Mouse, Rat
Host	Rabbit
Clonality	Polyclonal
Calculated MW	23627

Additional Information

Gene ID	9421
Other Names	HAND1; BHLHA27; EHAND; Heart- and neural crest derivatives-expressed protein 1; Class A basic helix-loop-helix protein 27; bHLHa27; Extraembryonic tissues; heart, autonomic nervous system and neural crest derivatives-expressed protein 1; eH
Dilution	IHC-P~~Immunohistochemistry: 1/100 - 1/300. ELISA: 1/10000. Not yet tested in other applications. IF~~1:50~200 ICC~~N/A E~~N/A
Format	Liquid in PBS containing 50% glycerol, 0.5% BSA and 0.09% (W/V) sodium azide.
Storage Conditions	-20°C

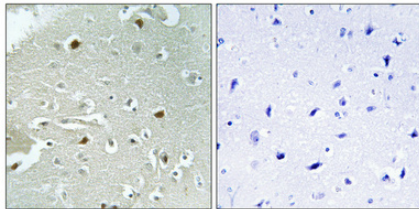
Protein Information

Name	HAND1
Synonyms	BHLHA27, EHAND
Function	Transcription factor that plays an essential role in both trophoblast giant cell differentiation and in cardiac morphogenesis (By similarity). Binds the DNA sequence 5'-NRTCTG-3' (non-canonical E-box) (By similarity). Acts as a transcriptional repressor of SOX15 (By similarity). In the adult, could be required for ongoing expression of cardiac-specific genes (PubMed: 9931445).
Cellular Location	Nucleus, nucleoplasm. Nucleus, nucleolus. Note=Interaction with MDFIC sequesters it into the nucleolus, preventing the transcription factor activity Phosphorylation by PLK4 disrupts the interaction with MDFIC and releases it from the nucleolus, leading to transcription factor activity (By similarity).
Tissue Location	Heart.

Background

Transcription factor that plays an essential role in both trophoblast-giant cells differentiation and in cardiac morphogenesis. In the adult, could be required for ongoing expression of cardiac-specific genes. Binds the DNA sequence 5'- NRTCTG-3' (non-canonical E-box) (By similarity).

Images



Immunohistochemical analysis of paraffin-embedded Human brain. Antibody was diluted at 1:100(4°,overnight). High-pressure and temperature Tris-EDTA,pH8.0 was used for antigen retrieval. Negative contrl (right) obtained from antibody was pre-absorbed by immunogen peptide.

Please note: All products are 'FOR RESEARCH USE ONLY. NOT FOR USE IN DIAGNOSTIC OR THERAPEUTIC PROCEDURES'.