

# p27 (phospho Thr157) Polyclonal Antibody

Catalog # AP67922

## Product Information

---

<b>Application</b>	IHC-P, IF, ICC, E
<b>Primary Accession</b>	<a href="#">P46527</a>
<b>Reactivity</b>	Human, Rat, Mouse
<b>Host</b>	Rabbit
<b>Clonality</b>	Polyclonal

## Additional Information

---

<b>Other Names</b>	CDKN1B; KIP1; Cyclin-dependent kinase inhibitor 1B; Cyclin-dependent kinase inhibitor p27; p27Kip1
<b>Dilution</b>	IHC-P~~Immunohistochemistry: 1/100 - 1/300. ELISA: 1/5000. Not yet tested in other applications. IF~~1:50~200 ICC~~N/A E~~N/A
<b>Format</b>	Liquid in PBS containing 50% glycerol, 0.5% BSA and 0.09% (W/V) sodium azide.
<b>Storage Conditions</b>	-20°C

## Protein Information

---

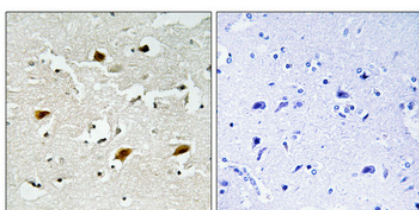
### Background

---

Important regulator of cell cycle progression. Inhibits the kinase activity of CDK2 bound to cyclin A, but has little inhibitory activity on CDK2 bound to SPDYA (PubMed:[28666995](#)). Involved in G1 arrest. Potent inhibitor of cyclin E- and cyclin A- CDK2 complexes. Forms a complex with cyclin type D-CDK4 complexes and is involved in the assembly, stability, and modulation of CCND1-CDK4 complex activation. Acts either as an inhibitor or an activator of cyclin type D-CDK4 complexes depending on its phosphorylation state and/or stoichiometry.

### Images

---



Immunohistochemical analysis of paraffin-embedded Human brain. Antibody was diluted at 1:100(4°, overnight). High-pressure and temperature Tris-EDTA, pH8.0 was used for antigen retrieval. Negative control (right) obtained from antibody was pre-absorbed by immunogen peptide.

Please note: All products are 'FOR RESEARCH USE ONLY. NOT FOR USE IN DIAGNOSTIC OR THERAPEUTIC PROCEDURES'.