

IL-8R β (phospho Ser347) Polyclonal Antibody

Catalog # AP67868

Product Information

Application	WB, IHC-P, IF, ICC, E
Primary Accession	P25025
Reactivity	Human, Mouse
Host	Rabbit
Clonality	Polyclonal
Calculated MW	40759

Additional Information

Gene ID	3579
Other Names	CXCR2; IL8RB; C-X-C chemokine receptor type 2; CXC-R2; CXCR-2; CDw128b; GRO/MGSA receptor; High affinity interleukin-8 receptor B; IL-8R B; IL-8 receptor type 2; CD antigen CD182
Dilution	WB~~Western Blot: 1/500 - 1/2000. Immunohistochemistry: 1/100 - 1/300. Immunofluorescence: 1/200 - 1/1000. ELISA: 1/10000. Not yet tested in other applications. IHC-P~~Western Blot: 1/500 - 1/2000. Immunohistochemistry: 1/100 - 1/300. Immunofluorescence: 1/200 - 1/1000. ELISA: 1/10000. Not yet tested in other applications. IF~~1:50~200 ICC~~N/A E~~N/A
Format	Liquid in PBS containing 50% glycerol, 0.5% BSA and 0.09% (W/V) sodium azide.
Storage Conditions	-20°C

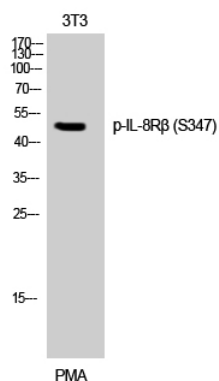
Protein Information

Name	CXCR2
Synonyms	IL8RB
Function	Receptor for interleukin-8 which is a powerful neutrophil chemotactic factor (PubMed: 1891716). Binding of IL-8 to the receptor causes activation of neutrophils. This response is mediated via a G- protein that activates a phosphatidylinositol-calcium second messenger system (PubMed: 8662698). Binds to IL-8 with high affinity. Also binds with high affinity to CXCL3, GRO/MGSA and NAP-2 (PubMed: 1891716). Involved in the homeostatic wound healing response to tissue injury, a multistep cascade that guides neutrophil migration to necrotic sites while avoiding collateral damage of healthy tissues. Signals intravascular neutrophil chemotaxis to the injury site.
Cellular Location	Cell membrane; Multi-pass membrane protein.

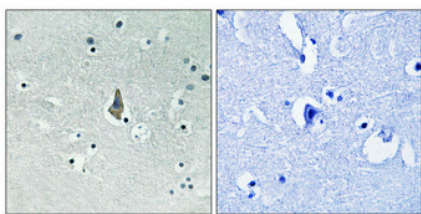
Background

Receptor for interleukin-8 which is a powerful neutrophil chemotactic factor. Binding of IL-8 to the receptor causes activation of neutrophils. This response is mediated via a G-protein that activates a phosphatidylinositol-calcium second messenger system. Binds to IL-8 with high affinity. Also binds with high affinity to CXCL3, GRO/MGSA and NAP-2.

Images



Western Blot analysis of 3T3 cells using Phospho-IL-8R β (S347) Polyclonal Antibody



Immunohistochemical analysis of paraffin-embedded Human brain. Antibody was diluted at 1:100(4°,overnight). High-pressure and temperature Tris-EDTA,pH8.0 was used for antigen retrieval. Negative contrl (right) obtained from antibody was pre-absorbed by immunogen peptide.

Please note: All products are 'FOR RESEARCH USE ONLY. NOT FOR USE IN DIAGNOSTIC OR THERAPEUTIC PROCEDURES'.