

Ets-1 (phospho Thr38) Polyclonal Antibody

Catalog # AP67810

Product Information

Application	WB, IHC-P, IF, ICC, E
Primary Accession	P14921
Reactivity	Human, Mouse, Rat
Host	Rabbit
Clonality	Polyclonal
Calculated MW	50408

Additional Information

Gene ID	2113
Other Names	ETS1; EWSR2; Protein C-ets-1; p54
Dilution	WB~~Western Blot: 1/500 - 1/2000. Immunohistochemistry: 1/100 - 1/300. Immunofluorescence: 1/200 - 1/1000. ELISA: 1/10000. Not yet tested in other applications. IHC-P~~N/A IF~~1:50~200 ICC~~N/A E~~N/A
Format	Liquid in PBS containing 50% glycerol, 0.5% BSA and 0.09% (W/V) sodium azide.
Storage Conditions	-20°C

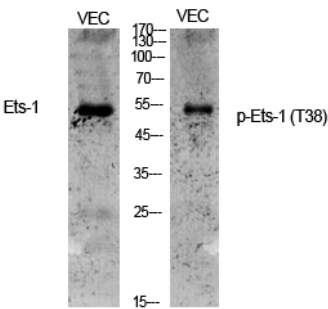
Protein Information

Name	ETS1
Synonyms	EWSR2
Function	Transcription factor (PubMed: 10698492 , PubMed: 11909962). Directly controls the expression of cytokine and chemokine genes in a wide variety of different cellular contexts (PubMed: 20378371). May control the differentiation, survival and proliferation of lymphoid cells (PubMed: 20378371). May also regulate angiogenesis through regulation of expression of genes controlling endothelial cell migration and invasion (PubMed: 15247905 , PubMed: 15592518).
Cellular Location	Nucleus. Cytoplasm Note=Delocalizes from nucleus to cytoplasm when coexpressed with isoform Ets-1 p27.
Tissue Location	Highly expressed within lymphoid cells. Isoforms c- ETS-1A and Ets-1 p27 are both detected in all fetal tissues tested, but vary with tissue type in adult tissues. None is detected in brain or kidney.

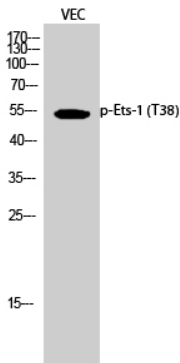
Background

Transcription factor. Directly controls the expression of cytokine and chemokine genes in a wide variety of different cellular contexts. May control the differentiation, survival and proliferation of lymphoid cells. May also regulate angiogenesis through regulation of expression of genes controlling endothelial cell migration and invasion.

Images



Western Blot analysis of various cells using Phospho-Ets-1 (T38) Polyclonal Antibody cells nucleus extracted by Minute TM Cytoplasmic and Nuclear Fractionation kit (SC-003, Inventbiotech, MN, USA).



Western Blot analysis of VEC cells using Phospho-Ets-1 (T38) Polyclonal Antibody cells nucleus extracted by Minute TM Cytoplasmic and Nuclear Fractionation kit (SC-003, Inventbiotech, MN, USA).

Please note: All products are 'FOR RESEARCH USE ONLY. NOT FOR USE IN DIAGNOSTIC OR THERAPEUTIC PROCEDURES'.