

# Topo II $\alpha$ (phospho Ser1525) Polyclonal Antibody

Catalog # AP67768

## Product Information

---

<b>Application</b>	WB, IHC-P, IF, ICC, E
<b>Primary Accession</b>	<a href="#">P11388</a>
<b>Reactivity</b>	Human, Mouse, Rat
<b>Host</b>	Rabbit
<b>Clonality</b>	Polyclonal
<b>Calculated MW</b>	174385

## Additional Information

---

<b>Gene ID</b>	7153
<b>Other Names</b>	TOP2A; TOP2; DNA topoisomerase 2-alpha; DNA topoisomerase II; alpha isozyme
<b>Dilution</b>	WB--Western Blot: 1/500 - 1/2000. Immunohistochemistry: 1/100 - 1/300. ELISA: 1/5000. Not yet tested in other applications. IHC-P--N/A IF--1:50~200 ICC--N/A E--N/A
<b>Format</b>	Liquid in PBS containing 50% glycerol, 0.5% BSA and 0.09% (W/V) sodium azide.
<b>Storage Conditions</b>	-20°C

## Protein Information

---

<b>Name</b>	TOP2A
<b>Synonyms</b>	TOP2
<b>Function</b>	Key decatenating enzyme that alters DNA topology by binding to two double-stranded DNA molecules, generating a double-stranded break in one of the strands, passing the intact strand through the broken strand, and religating the broken strand (PubMed: <a href="#">17567603</a> , PubMed: <a href="#">18790802</a> , PubMed: <a href="#">22013166</a> , PubMed: <a href="#">22323612</a> ). May play a role in regulating the period length of BMAL1 transcriptional oscillation (By similarity).
<b>Cellular Location</b>	Cytoplasm. Nucleus, nucleoplasm. Nucleus. Nucleus, nucleolus
<b>Tissue Location</b>	Expressed in the tonsil, spleen, lymph node, thymus, skin, pancreas, testis, colon, kidney, liver, brain and lung (PubMed:9155056). Also found in high-grade lymphomas, squamous cell lung tumors and seminomas (PubMed:9155056)

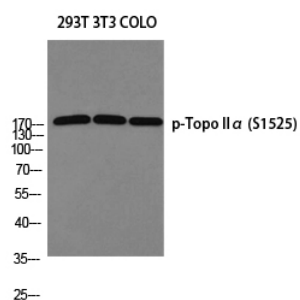
## Background

---

Control of topological states of DNA by transient breakage and subsequent rejoining of DNA strands. Topoisomerase II makes double-strand breaks. Essential during mitosis and meiosis for proper segregation of daughter chromosomes. May play a role in regulating the period length of ARNTL/BMAL1 transcriptional oscillation (By similarity).

## Images

---



Western blot analysis of 293T 3T3 COLO using p-Topo II $\alpha$  (S1525) antibody. Antibody was diluted at 1:1000

Please note: All products are 'FOR RESEARCH USE ONLY. NOT FOR USE IN DIAGNOSTIC OR THERAPEUTIC PROCEDURES'.