

# Integrin $\beta$ 4 (phospho Tyr1510) Polyclonal Antibody

Catalog # AP67687

## Product Information

---

Application	WB, IHC-P, IF, ICC, E
Primary Accession	<a href="#">P16144</a>
Reactivity	Human, Mouse, Rat
Host	Rabbit
Clonality	Polyclonal
Calculated MW	202167

## Additional Information

---

Gene ID	3691
Other Names	ITGB4; Integrin beta-4; GP150; CD antigen CD104
Dilution	WB~~Western Blot: 1/500 - 1/2000. Immunohistochemistry: 1/100 - 1/300. ELISA: 1/10000. Not yet tested in other applications. IHC-P~~N/A IF~~1:50~200 ICC~~N/A E~~N/A
Format	Liquid in PBS containing 50% glycerol, 0.5% BSA and 0.09% (W/V) sodium azide.
Storage Conditions	-20°C

## Protein Information

---

Name	ITGB4
Function	Integrin alpha-6/beta-4 is a receptor for laminin. Plays a critical structural role in the hemidesmosome of epithelial cells. Is required for the regulation of keratinocyte polarity and motility. ITGA6:ITGB4 binds to NRG1 (via EGF domain) and this binding is essential for NRG1-ERBB signaling (PubMed: <a href="#">20682778</a> ). ITGA6:ITGB4 binds to IGF1 and this binding is essential for IGF1 signaling (PubMed: <a href="#">22351760</a> ). ITGA6:ITGB4 binds to IGF2 and this binding is essential for IGF2 signaling (PubMed: <a href="#">28873464</a> ).
Cellular Location	Cell membrane; Single-pass type I membrane protein. Cell membrane; Lipid-anchor. Cell junction, hemidesmosome Note=Colocalizes with DST at the leading edge of migrating keratinocytes
Tissue Location	Integrin alpha-6/beta-4 is predominantly expressed by epithelia. Isoform beta-4D is also expressed in colon and placenta Isoform beta-4E is also expressed in epidermis, lung, duodenum, heart, spleen and stomach

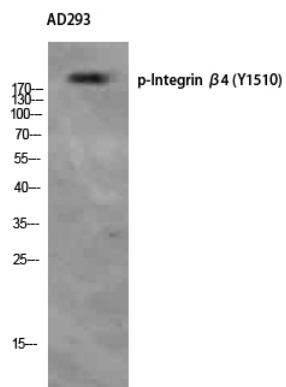
## Background

---

Integrin alpha-6/beta-4 is a receptor for laminin. Plays a critical structural role in the hemidesmosome of epithelial cells. Is required for the regulation of keratinocyte polarity and motility. ITGA6:ITGB4 binds to NRG1 (via EGF domain) and this binding is essential for NRG1-ERBB signaling (PubMed:[20682778](#)). ITGA6:ITGB4 binds to IGF1 and this binding is essential for IGF1 signaling (PubMed:[22351760](#)). ITGA6:ITGB4 binds to IGF2 and this binding is essential for IGF2 signaling (PubMed:[28873464](#)).

## Images

---



Western Blot analysis of AD293 using Phospho-Integrin  $\beta$ 4 (Y1510) Polyclonal Antibody. Antibody was diluted at 1:500

Please note: All products are 'FOR RESEARCH USE ONLY. NOT FOR USE IN DIAGNOSTIC OR THERAPEUTIC PROCEDURES'.