

# WAVE1 (phospho Tyr125) Polyclonal Antibody

Catalog # AP67612

## Product Information

Application	WB, IHC-P, IF, ICC, E
Primary Accession	<a href="#">Q92558</a>
Reactivity	Human, Mouse, Rat
Host	Rabbit
Clonality	Polyclonal
Calculated MW	61652

## Additional Information

Gene ID	8936
Other Names	WASF1; KIAA0269; SCAR1; WAVE1; Wiskott-Aldrich syndrome protein family member 1; WASP family protein member 1; Protein WAVE-1; Verprolin homology domain-containing protein 1
Dilution	WB~~Western Blot: 1/500 - 1/2000. Immunohistochemistry: 1/100 - 1/300. Immunofluorescence: 1/200 - 1/1000. ELISA: 1/5000. Not yet tested in other applications. IHC-P~~N/A IF~~1:50~200 ICC~~N/A E~~N/A
Format	Liquid in PBS containing 50% glycerol, 0.5% BSA and 0.09% (W/V) sodium azide.
Storage Conditions	-20°C

## Protein Information

Name	WASF1 ( <a href="#">HGNC:12732</a> )
Synonyms	KIAA0269, SCAR1, WAVE1
Function	Downstream effector molecule involved in the transmission of signals from tyrosine kinase receptors and small GTPases to the actin cytoskeleton. Promotes formation of actin filaments. Part of the WAVE complex that regulates lamellipodia formation (PubMed: <a href="#">29961568</a> ). The WAVE complex regulates actin filament reorganization via its interaction with the Arp2/3 complex (By similarity). As component of the WAVE1 complex, required for BDNF-NTRK2 endocytic trafficking and signaling from early endosomes (By similarity). Also involved in the regulation of mitochondrial dynamics (PubMed: <a href="#">29961568</a> ).
Cellular Location	Cytoplasm, cytoskeleton. Synapse {ECO:0000250 UniProtKB:Q5BJU7} Cell junction, focal adhesion. Note=Dot- like pattern in the cytoplasm. Concentrated in Rac-regulated membrane- ruffling areas (PubMed:9889097).

Partial translocation to focal adhesion sites might be mediated by interaction with SORBS2 (PubMed:18559503). In neurons, colocalizes with activated NTRK2 after BDNF addition in endocytic sites through the association with TMEM108 (By similarity). {ECO:0000250 | UniProtKB:Q8R5H6, ECO:0000269 | PubMed:18559503, ECO:0000269 | PubMed:9889097}

#### Tissue Location

Highly expressed in brain. Lowly expressed in testis, ovary, colon, kidney, pancreas, thymus, small intestine and peripheral blood

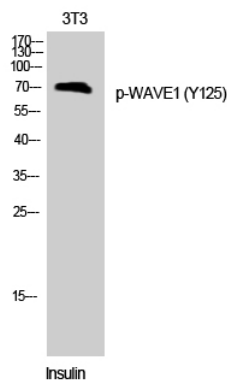
## Background

---

Downstream effector molecule involved in the transmission of signals from tyrosine kinase receptors and small GTPases to the actin cytoskeleton. Promotes formation of actin filaments. Part of the WAVE complex that regulates lamellipodia formation. The WAVE complex regulates actin filament reorganization via its interaction with the Arp2/3 complex (By similarity). As component of the WAVE1 complex, required for BDNF- NTRK2 endocytic trafficking and signaling from early endosomes (By similarity).

## Images

---



Western Blot analysis of 3T3 cells using Phospho-WAVE1 (Y125) Polyclonal Antibody

Please note: All products are 'FOR RESEARCH USE ONLY. NOT FOR USE IN DIAGNOSTIC OR THERAPEUTIC PROCEDURES'.