

Glycogen Synthase 1 (phospho Ser645) Polyclonal Antibody

Catalog # AP67565

Product Information

Application	WB, IHC-P
Primary Accession	P13807
Reactivity	Human, Mouse, Rat
Host	Rabbit
Clonality	Polyclonal
Calculated MW	83786

Additional Information

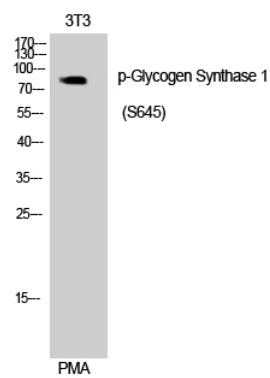
Gene ID	2997
Other Names	GYS1; GYS; Glycogen [starch] synthase; muscle
Dilution	WB~~Western Blot: 1/500 - 1/2000. Immunohistochemistry: 1/100 - 1/300. ELISA: 1/5000. Not yet tested in other applications. IHC-P~~N/A
Format	Liquid in PBS containing 50% glycerol, 0.5% BSA and 0.09% (W/V) sodium azide.
Storage Conditions	-20°C

Protein Information

Name	GYS1 (HGNC:4706)
Synonyms	GYS
Function	Glycogen synthase participates in the glycogen biosynthetic process along with glycogenin and glycogen branching enzyme. Extends the primer composed of a few glucose units formed by glycogenin by adding new glucose units to it. In this context, glycogen synthase transfers the glycosyl residue from UDP-Glc to the non-reducing end of alpha-1,4-glucan.
Tissue Location	Expressed in skeletal muscle and most other cell types where glycogen is present.

Background

Transfers the glycosyl residue from UDP-Glc to the non- reducing end of alpha-1,4-glucan.



Please note: All products are 'FOR RESEARCH USE ONLY. NOT FOR USE IN DIAGNOSTIC OR THERAPEUTIC PROCEDURES'.