

p130 Cas (phospho Tyr410) Polyclonal Antibody

Catalog # AP67537

Product Information

Application	WB, IHC-P
Primary Accession	P56945
Reactivity	Human, Mouse, Rat
Host	Rabbit
Clonality	Polyclonal
Calculated MW	93372

Additional Information

Gene ID	9564
Other Names	BCAR1; CAS; CASS1; CRKAS; Breast cancer anti-estrogen resistance protein 1; CRK-associated substrate; Cas scaffolding protein family member 1; p130cas
Dilution	WB~~Western Blot: 1/500 - 1/2000. Immunohistochemistry: 1/100 - 1/300. ELISA: 1/5000. Not yet tested in other applications. IHC-P~~N/A
Format	Liquid in PBS containing 50% glycerol, 0.5% BSA and 0.09% (W/V) sodium azide.
Storage Conditions	-20°C

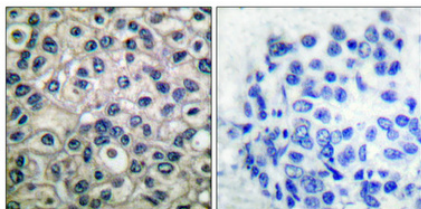
Protein Information

Name	BCAR1
Synonyms	CAS, CASS1, CRKAS
Function	Docking protein which plays a central coordinating role for tyrosine kinase-based signaling related to cell adhesion (PubMed: 12432078 , PubMed: 12832404). Implicated in induction of cell migration and cell branching (PubMed: 12432078 , PubMed: 12832404 , PubMed: 17038317). Involved in the BCAR3-mediated inhibition of TGF β signaling (By similarity).
Cellular Location	Cell junction, focal adhesion. Cytoplasm Cell projection, axon {ECO:0000250 UniProtKB:Q61140} Note=Unphosphorylated form localizes in the cytoplasm (By similarity) Localizes to focal adhesion sites following integrin engagement (By similarity). {ECO:0000250 UniProtKB:Q61140}
Tissue Location	Expressed in B-cells (at protein level) (PubMed:9020138). Widely expressed with an abundant expression in the testis (PubMed:10639512). Low level of expression seen in the liver, thymus, and peripheral blood leukocytes (PubMed:10639512)

Background

Docking protein which plays a central coordinating role for tyrosine kinase-based signaling related to cell adhesion. Implicated in induction of cell migration. Overexpression confers antiestrogen resistance on breast cancer cells.

Images



Immunohistochemical analysis of paraffin-embedded Human breast cancer. Antibody was diluted at 1:100(4°,overnight). High-pressure and temperature Tris-EDTA,pH8.0 was used for antigen retrieval. Negative contrl (right) obtained from antibody was pre-absorbed by immunogen peptide.

Please note: All products are 'FOR RESEARCH USE ONLY. NOT FOR USE IN DIAGNOSTIC OR THERAPEUTIC PROCEDURES'.