

# EpoR (phospho Tyr368) Polyclonal Antibody

Catalog # AP67484

## Product Information

|                          |                        |
|--------------------------|------------------------|
| <b>Application</b>       | WB, IF, ICC, E         |
| <b>Primary Accession</b> | <a href="#">P19235</a> |
| <b>Reactivity</b>        | Human, Mouse, Rat      |
| <b>Host</b>              | Rabbit                 |
| <b>Clonality</b>         | Polyclonal             |

## Additional Information

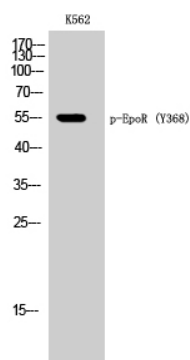
|                           |  |
|---------------------------|--|
| <b>Other Names</b>        | EPOR; Erythropoietin receptor; EPO-R   |
| <b>Dilution</b>           | WB--Western Blot: 1/500 - 1/2000. Immunofluorescence: 1/200 - 1/1000. ELISA: 1/10000. Not yet tested in other applications. IF--1:50~200 ICC--N/A E--N/A |
| <b>Format</b>             | Liquid in PBS containing 50% glycerol, 0.5% BSA and 0.09% (W/V) sodium azide.  |
| <b>Storage Conditions</b> | -20°C  |

## Protein Information

### Background

Receptor for erythropoietin. Mediates erythropoietin- induced erythroblast proliferation and differentiation. Upon EPO stimulation, EPOR dimerizes triggering the JAK2/STAT5 signaling cascade. In some cell types, can also activate STAT1 and STAT3. May also activate the LYN tyrosine kinase.

### Images



Western Blot analysis of K562 cells using Phospho-EpoR (Y368) Polyclonal Antibody

Please note: All products are 'FOR RESEARCH USE ONLY. NOT FOR USE IN DIAGNOSTIC OR THERAPEUTIC PROCEDURES'.