

Crk II (phospho Tyr221) Polyclonal Antibody

Catalog # AP67459

Product Information

Application	WB, IF, ICC, E
Primary Accession	P46108
Reactivity	Human, Mouse, Rat, Monkey
Host	Rabbit
Clonality	Polyclonal
Calculated MW	33831

Additional Information

Gene ID	1398
Other Names	CRK; Adapter molecule crk; Proto-oncogene c-Crk; p38
Dilution	WB~~Western Blot: 1/500 - 1/2000. Immunofluorescence: 1/200 - 1/1000. ELISA: 1/40000. Not yet tested in other applications. IF~~1:50~200 ICC~~N/A E~~N/A
Format	Liquid in PBS containing 50% glycerol, 0.5% BSA and 0.09% (W/V) sodium azide.
Storage Conditions	-20°C

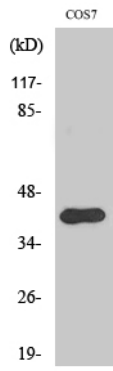
Protein Information

Name	CRK
Function	Involved in cell branching and adhesion mediated by BCAR1- CRK-RAPGEF1 signaling and activation of RAP1.
Cellular Location	Cytoplasm. Cell membrane. Note=Translocated to the plasma membrane upon cell adhesion.

Background

Isoform Crk-II: Regulates cell adhesion, spreading and migration. Mediates attachment-induced MAPK8 activation, membrane ruffling and cell motility in a Rac-dependent manner. Involved in phagocytosis of apoptotic cells and cell motility via its interaction with DOCK1 and DOCK4. May regulate the EFNA5-EPHA3 signaling.

Images



Western Blot analysis of various cells using Phospho-Crk II (Y221) Polyclonal Antibody

Please note: All products are 'FOR RESEARCH USE ONLY. NOT FOR USE IN DIAGNOSTIC OR THERAPEUTIC PROCEDURES'.