

# Eg5 (phospho Thr926) Polyclonal Antibody

Catalog # AP67304

## Product Information

---

<b>Application</b>	WB, IHC-P, IF, ICC, E
<b>Primary Accession</b>	<a href="#">P52732</a>
<b>Reactivity</b>	Human, Rat, Mouse
<b>Host</b>	Rabbit
<b>Clonality</b>	Polyclonal
<b>Calculated MW</b>	119159

## Additional Information

---

<b>Gene ID</b>	3832
<b>Other Names</b>	KIF11; EG5; KNSL1; TRIP5; Kinesin-like protein KIF11; Kinesin-like protein 1; Kinesin-like spindle protein HKSP; Kinesin-related motor protein Eg5; Thyroid receptor-interacting protein 5; TR-interacting protein 5; TRIP-5
<b>Dilution</b>	WB~~Western Blot: 1/500 - 1/2000. ELISA: 1/5000. Not yet tested in other applications. IHC-P~~Western Blot: 1/500 - 1/2000. ELISA: 1/5000. Not yet tested in other applications. IF~~1:50~200 ICC~~N/A E~~N/A
<b>Format</b>	Liquid in PBS containing 50% glycerol, 0.5% BSA and 0.09% (W/V) sodium azide.
<b>Storage Conditions</b>	-20°C

## Protein Information

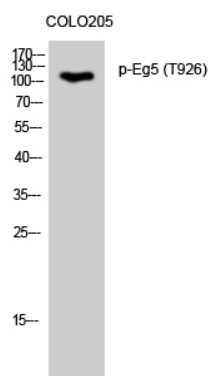
---

<b>Name</b>	KIF11
<b>Synonyms</b>	EG5, KNSL1, TRIP5
<b>Function</b>	Motor protein required for establishing a bipolar spindle and thus contributing to chromosome congression during mitosis (PubMed: <a href="#">19001501</a> , PubMed: <a href="#">37728657</a> ). Required in non-mitotic cells for transport of secretory proteins from the Golgi complex to the cell surface (PubMed: <a href="#">23857769</a> ).
<b>Cellular Location</b>	Cytoplasm. Cytoplasm, cytoskeleton, spindle pole

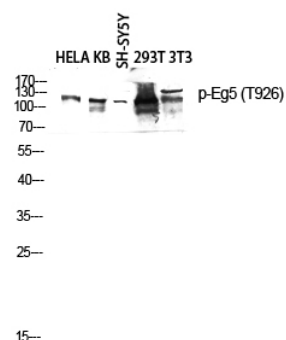
## Background

---

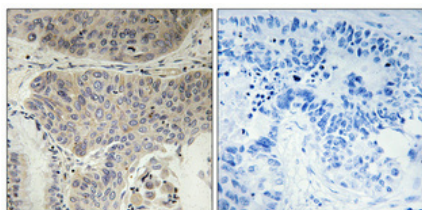
Motor protein required for establishing a bipolar spindle during mitosis (PubMed: [19001501](#)). Required in non-mitotic cells for transport of secretory proteins from the Golgi complex to the cell surface (PubMed:[23857769](#)).



Western Blot analysis of COLO205 cells using Phospho-Eg5 (T926) Polyclonal Antibody diluted at 1 : 2000 cells nucleus extracted by Minute TM Cytoplasmic and Nuclear Fractionation kit (SC-003, Inventbiotech, MN, USA).



Western blot analysis of HELA KB SH-SY5Y 293T 3T3 lysis using Phospho-Eg5 (T926) antibody. Antibody was diluted at 1:2000 cells nucleus extracted by Minute TM Cytoplasmic and Nuclear Fractionation kit (SC-003, Inventbiotech, MN, USA).



Immunohistochemical analysis of paraffin-embedded Human lung cancer. Antibody was diluted at 1:100(4°, overnight). High-pressure and temperature Tris-EDTA, pH8.0 was used for antigen retrieval. Negative contrl (right) obtained from antibody was pre-absorbed by immunogen peptide.

Please note: All products are 'FOR RESEARCH USE ONLY. NOT FOR USE IN DIAGNOSTIC OR THERAPEUTIC PROCEDURES'.