

# IL-2R $\beta$ (phospho Tyr364) Polyclonal Antibody

Catalog # AP67302

## Product Information

---

Application	WB, E
Primary Accession	<a href="#">P14784</a>
Reactivity	Human, Mouse, Rat, Monkey
Host	Rabbit
Clonality	Polyclonal
Calculated MW	61117

## Additional Information

---

Gene ID	3560
Other Names	IL2RB; Interleukin-2 receptor subunit beta; IL-2 receptor subunit beta; IL-2R subunit beta; IL-2RB; High affinity IL-2 receptor subunit beta; p70-75; p75; CD antigen CD122
Dilution	WB~~Western Blot: 1/500 - 1/2000. ELISA: 1/10000. Not yet tested in other applications. E~~N/A
Format	Liquid in PBS containing 50% glycerol, 0.5% BSA and 0.09% (W/V) sodium azide.
Storage Conditions	-20°C

## Protein Information

---

Name	IL2RB ( <a href="#">HGNC:6009</a> )
Function	Receptor for interleukin-2. This beta subunit is involved in receptor mediated endocytosis and transduces the mitogenic signals of IL2. Probably in association with IL15RA, involved in the stimulation of neutrophil phagocytosis by IL15 (PubMed: <a href="#">15123770</a> , PubMed: <a href="#">31040185</a> ).
Cellular Location	Cell membrane; Single-pass type I membrane protein

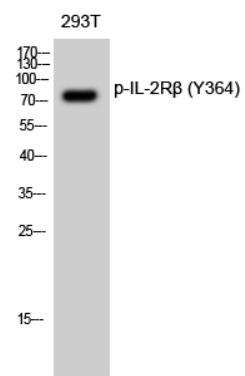
## Background

---

Receptor for interleukin-2. This beta subunit is involved in receptor mediated endocytosis and transduces the mitogenic signals of IL2. Probably in association with IL15RA, involved in the stimulation of neutrophil phagocytosis by IL15 (PubMed:[15123770](#)).

## Images

---



Western Blot analysis of 293T cells using Phospho-IL-2R $\beta$  (Y364) Polyclonal Antibody diluted at 1 : 500

Please note: All products are 'FOR RESEARCH USE ONLY. NOT FOR USE IN DIAGNOSTIC OR THERAPEUTIC PROCEDURES'.