

# Cdc25A (phospho Ser124) Polyclonal Antibody

Catalog # AP67283

## Product Information

---

|                   |                        |
|-------------------|------------------------|
| Application       | WB, E                  |
| Primary Accession | <a href="#">P30304</a> |
| Reactivity        | Human, Mouse, Rat      |
| Host              | Rabbit                 |
| Clonality         | Polyclonal             |
| Calculated MW     | 59087                  |

## Additional Information

---

|                    |   |
|--------------------|---|
| Gene ID            | 993   |
| Other Names        | CDC25A; M-phase inducer phosphatase 1; Dual specificity phosphatase Cdc25A                    |
| Dilution           | WB~~Western Blot: 1/500 - 1/2000. ELISA: 1/5000. Not yet tested in other applications. E~~N/A |
| Format             | Liquid in PBS containing 50% glycerol, 0.5% BSA and 0.09% (W/V) sodium azide.                 |
| Storage Conditions | -20°C   |

## Protein Information

---

|          |   |
|----------|---|
| Name     | CDC25A  |
| Function | Tyrosine protein phosphatase which functions as a dosage- dependent inducer of mitotic progression (PubMed: <a href="#">12676925</a> , PubMed: <a href="#">14559997</a> , PubMed: <a href="#">1836978</a> , PubMed: <a href="#">20360007</a> ). Directly dephosphorylates CDK1 and stimulates its kinase activity (PubMed: <a href="#">20360007</a> ). Also dephosphorylates CDK2 in complex with cyclin-E, in vitro (PubMed: <a href="#">20360007</a> ). |

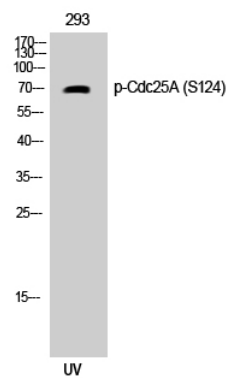
## Background

---

Tyrosine protein phosphatase which functions as a dosage-dependent inducer of mitotic progression. Directly dephosphorylates CDK1 and stimulates its kinase activity. Also dephosphorylates CDK2 in complex with cyclin E, in vitro.

## Images

---



Western Blot analysis of 293 cells using Phospho-Cdc25A (S124) Polyclonal Antibody

Please note: All products are 'FOR RESEARCH USE ONLY. NOT FOR USE IN DIAGNOSTIC OR THERAPEUTIC PROCEDURES'.