

ATRIP (phospho Ser68) Polyclonal Antibody

Catalog # AP67268

Product Information

Application	WB, E
Primary Accession	Q8WXE1
Reactivity	Human, Mouse, Rat
Host	Rabbit
Clonality	Polyclonal
Calculated MW	85838

Additional Information

Gene ID	84126
Other Names	ATRIP; AGS1; ATR-interacting protein; ATM and Rad3-related-interacting protein
Dilution	WB~~Western Blot: 1/500 - 1/2000. ELISA: 1/40000. Not yet tested in other applications. E~~N/A
Format	Liquid in PBS containing 50% glycerol, 0.5% BSA and 0.09% (W/V) sodium azide.
Storage Conditions	-20°C

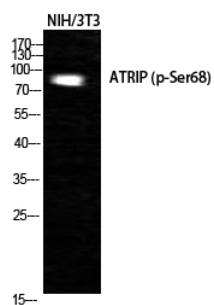
Protein Information

Name	ATRIP
Synonyms	AGS1
Function	Required for checkpoint signaling after DNA damage. Required for ATR expression, possibly by stabilizing the protein.
Cellular Location	Nucleus. Note=Redistributes to discrete nuclear foci upon DNA damage
Tissue Location	Ubiquitous..

Background

Required for checkpoint signaling after DNA damage. Required for ATR expression, possibly by stabilizing the protein.

Images



Western Blot analysis of NIH-3T3 cells using Phospho-ATRIP (S68) Polyclonal Antibody cells nucleus extracted by Minute TM Cytoplasmic and Nuclear Fractionation kit (SC-003, Inventbiotech, MN, USA).

Please note: All products are 'FOR RESEARCH USE ONLY. NOT FOR USE IN DIAGNOSTIC OR THERAPEUTIC PROCEDURES'.