

KOR-1 (phospho Ser369) Polyclonal Antibody

Catalog # AP67233

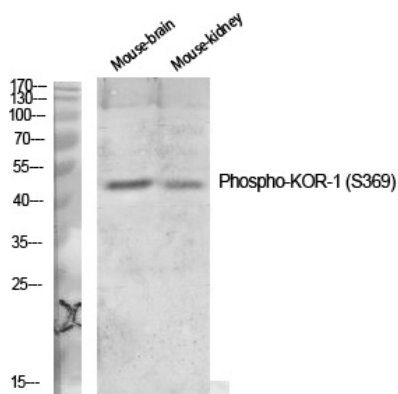
Product Information

Application	WB, IHC-P, IF, ICC, E
Reactivity	Mouse, Rat
Host	Rabbit
Clonality	Polyclonal

Additional Information

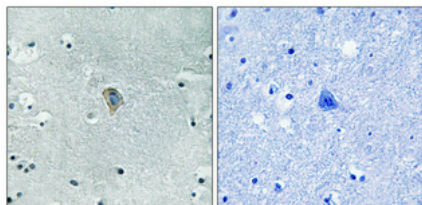
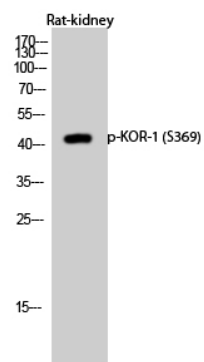
Other Names	OPRK1; OPRK; Kappa-type opioid receptor; K-OR-1; KOR-1
Dilution	WB~~Western Blot: 1/500 - 1/2000. Immunohistochemistry: 1/100 - 1/300. ELISA: 1/10000. Not yet tested in other applications. IHC-P~~Western Blot: 1/500 - 1/2000. Immunohistochemistry: 1/100 - 1/300. ELISA: 1/10000. Not yet tested in other applications. IF~~1:50~200 ICC~~N/A E~~N/A
Format	Liquid in PBS containing 50% glycerol, 0.5% BSA and 0.09% (W/V) sodium azide.
Storage Conditions	-20°C

Images



Western Blot analysis of various cells using Phospho-KOR-1 (S369) Polyclonal Antibody diluted at 1 : 1000

Western Blot analysis of Rat-kidney cells using Phospho-KOR-1 (S369) Polyclonal Antibody diluted at 1 : 1000



Immunohistochemical analysis of paraffin-embedded Human brain. Antibody was diluted at 1:100(4°,overnight). High-pressure and temperature Tris-EDTA,pH8.0 was used for antigen retrieval. Negative contrl (right) obtaned from antibody was pre-absorbed by immunogen peptide.

Please note: All products are 'FOR RESEARCH USE ONLY. NOT FOR USE IN DIAGNOSTIC OR THERAPEUTIC PROCEDURES'.