

SERPINC1 Antibody (C-term)

Purified Rabbit Polyclonal Antibody (Pab)

Catalog # AP6715b

Product Information

Application	WB, IHC-P, FC, IF, E
Primary Accession	P01008
Reactivity	Human, Mouse
Host	Rabbit
Clonality	Polyclonal
Isotype	Rabbit IgG
Clone Names	RB18489
Calculated MW	52602
Antigen Region	364-393

Additional Information

Gene ID	462
Other Names	Antithrombin-III, ATIII, Serpin C1, SERPINC1, AT3
Target/Specificity	This SERPINC1 antibody is generated from rabbits immunized with a KLH conjugated synthetic peptide between 364-393 amino acids from the C-terminal region of human SERPINC1.
Dilution	WB~1:1000 IHC-P~1:100~500 FC~1:10~50 IF~1:10~50 E~Use at an assay dependent concentration.
Format	Purified polyclonal antibody supplied in PBS with 0.09% (W/V) sodium azide. This antibody is prepared by Saturated Ammonium Sulfate (SAS) precipitation followed by dialysis against PBS.
Storage	Maintain refrigerated at 2-8°C for up to 2 weeks. For long term storage store at -20°C in small aliquots to prevent freeze-thaw cycles.
Precautions	SERPINC1 Antibody (C-term) is for research use only and not for use in diagnostic or therapeutic procedures.

Protein Information

Name	SERPINC1
Synonyms	AT3
Function	Most important serine protease inhibitor in plasma that regulates the blood coagulation cascade (PubMed: 15140129 , PubMed: 15853774). AT-III inhibits

thrombin, matriptase-3/TMPRSS7, as well as factors IXa, Xa and XIa (PubMed:[15140129](#)). Its inhibitory activity is greatly enhanced in the presence of heparin.

Cellular Location Secreted, extracellular space.

Tissue Location Found in plasma.

Background

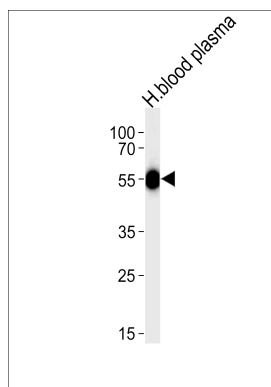
SERPINC1 is a plasma protease inhibitor and a member of the serpin superfamily. This protein inhibits thrombin as well as other activated serine proteases of the coagulation system, and it regulates the blood coagulation cascade. The protein includes two functional domains: the heparin binding-domain at the N-terminus of the mature protein, and the reactive site domain at the C-terminus. The inhibitory activity is enhanced by the presence of heparin.

References

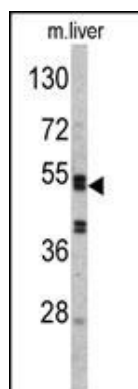
Doi,T., Arch. Biochem. Biophys. 489 (1-2), 62-67 (2009)

Sun,X.J., J. Biol. Chem. 264 (19), 11288-11293 (1989)

Images

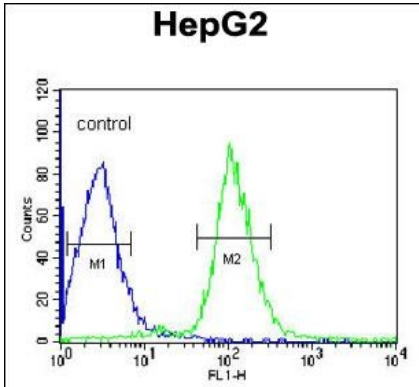
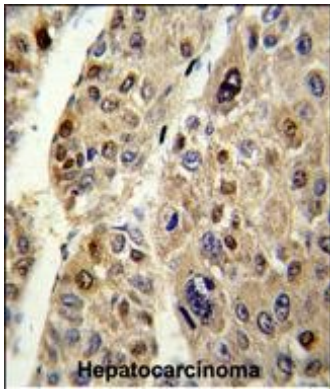


Western blot analysis of lysate from human blood plasma tissue lysate, using SERPINC1 Antibody (C-term)(Cat. #AP6715b). AP6715b was diluted at 1:1000 at each lane. A goat anti-rabbit IgG H&L(HRP) at 1:5000 dilution was used as the secondary antibody. Lysate at 35ug per lane.

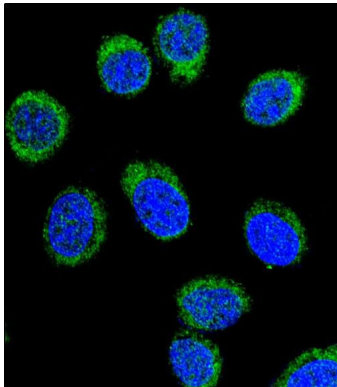


Western blot analysis of SERPINC1 Antibody (C-term) (Cat. #AP6715b) in mouse liver tissue lysates (35ug/lane). SERPINC1 (arrow) was detected using the purified Pab.

Formalin-fixed and paraffin-embedded human hepatocarcinoma reacted with SERPINC1 Antibody (C-term), which was peroxidase-conjugated to the secondary antibody, followed by DAB staining. This data demonstrates the use of this antibody for immunohistochemistry; clinical relevance has not been evaluated.



SERPINC1 Antibody (C-term) (Cat. #AP6715b) flow cytometric analysis of HepG2 cells (right histogram) compared to a negative control cell (left histogram). FITC-conjugated goat-anti-rabbit secondary antibodies were used for the analysis.



Confocal immunofluorescent analysis of SERPINC1 Antibody (C-term)(Cat. #AP6715b) with 293 cell followed by Alexa Fluor® 488-conjugated goat anti-rabbit IgG (green). DAPI was used to stain the cell nuclear (blue).

Please note: All products are 'FOR RESEARCH USE ONLY. NOT FOR USE IN DIAGNOSTIC OR THERAPEUTIC PROCEDURES'.