

# IKK $\alpha$ / $\beta$ (phospho Ser180/181) Polyclonal Antibody

Catalog # AP67074

## Product Information

Application	WB, IHC-P, IF, ICC, E
Primary Accession	<a href="#">O15111</a> , <a href="#">O14920</a>
Reactivity	Human, Mouse, Rat
Host	Rabbit
Clonality	Polyclonal
Calculated MW	84640

## Additional Information

Gene ID	1147
Other Names	CHUK; IKKA; TCF16; Inhibitor of nuclear factor kappa-B kinase subunit alpha; I-kappa-B kinase alpha; IKK-A; IKK-alpha; IkBKA; IkappaB kinase; Conserved helix-loop-helix ubiquitous kinase; I-kappa-B kinase 1; IKK1; Nuclear factor NF-kappa-B
Dilution	WB~~Western Blot: 1/500 - 1/2000. Immunohistochemistry: 1/100 - 1/300. ELISA: 1/20000. Not yet tested in other applications. IHC-P~~N/A IF~~1:50~200 ICC~~N/A E~~N/A
Format	Liquid in PBS containing 50% glycerol, 0.5% BSA and 0.09% (W/V) sodium azide.
Storage Conditions	-20°C

## Protein Information

Name	CHUK
Synonyms	IKKA, TCF16
Function	Serine kinase that plays an essential role in the NF-kappa-B signaling pathway which is activated by multiple stimuli such as inflammatory cytokines, bacterial or viral products, DNA damages or other cellular stresses (PubMed: <a href="#">18626576</a> , PubMed: <a href="#">9244310</a> , PubMed: <a href="#">9252186</a> , PubMed: <a href="#">9346484</a> ). Acts as a part of the canonical IKK complex in the conventional pathway of NF-kappa-B activation and phosphorylates inhibitors of NF-kappa-B on serine residues (PubMed: <a href="#">18626576</a> , PubMed: <a href="#">35952808</a> , PubMed: <a href="#">9244310</a> , PubMed: <a href="#">9252186</a> , PubMed: <a href="#">9346484</a> ). These modifications allow polyubiquitination of the inhibitors and subsequent degradation by the proteasome (PubMed: <a href="#">18626576</a> , PubMed: <a href="#">9244310</a> , PubMed: <a href="#">9252186</a> , PubMed: <a href="#">9346484</a> ). In turn, free NF-kappa-B is translocated into the nucleus and activates the transcription of hundreds of genes involved in immune

response, growth control, or protection against apoptosis (PubMed:[18626576](#), PubMed:[9244310](#), PubMed:[9252186](#), PubMed:[9346484](#)). Negatively regulates the pathway by phosphorylating the scaffold protein TAXBP1 and thus promoting the assembly of the A20/TNFAIP3 ubiquitin-editing complex (composed of A20/TNFAIP3, TAX1BP1, and the E3 ligases ITCH and RNF11) (PubMed:[21765415](#)). Therefore, CHUK plays a key role in the negative feedback of NF-kappa-B canonical signaling to limit inflammatory gene activation. As part of the non-canonical pathway of NF-kappa-B activation, the MAP3K14-activated CHUK/IKKA homodimer phosphorylates NFKB2/p100 associated with RelB, inducing its proteolytic processing to NFKB2/p52 and the formation of NF-kappa-B RelB-p52 complexes (PubMed:[20501937](#)). In turn, these complexes regulate genes encoding molecules involved in B-cell survival and lymphoid organogenesis. Also participates in the negative feedback of the non-canonical NF-kappa-B signaling pathway by phosphorylating and destabilizing MAP3K14/NIK. Within the nucleus, phosphorylates CREBBP and consequently increases both its transcriptional and histone acetyltransferase activities (PubMed:[17434128](#)). Modulates chromatin accessibility at NF-kappa-B- responsive promoters by phosphorylating histones H3 at 'Ser-10' that are subsequently acetylated at 'Lys-14' by CREBBP (PubMed:[12789342](#)). Additionally, phosphorylates the CREBBP-interacting protein NCOA3. Also phosphorylates FOXO3 and may regulate this pro-apoptotic transcription factor (PubMed:[15084260](#)). Phosphorylates RIPK1 at 'Ser-25' which represses its kinase activity and consequently prevents TNF-mediated RIPK1-dependent cell death (By similarity). Phosphorylates AMBRA1 following mitophagy induction, promoting AMBRA1 interaction with ATG8 family proteins and its mitophagic activity (PubMed:[30217973](#)).

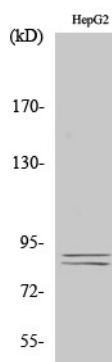
#### Cellular Location

Cytoplasm. Nucleus Note=Shuttles between the cytoplasm and the nucleus

#### Tissue Location

Widely expressed.

## Images



Western Blot analysis of various cells using Phospho-IKKα/β (S180/181) Polyclonal Antibody diluted at 1 : 1000

Please note: All products are 'FOR RESEARCH USE ONLY. NOT FOR USE IN DIAGNOSTIC OR THERAPEUTIC PROCEDURES'.