

FoxO4 (phospho Ser197) Polyclonal Antibody

Catalog # AP67048

Product Information

Application	WB, IHC-P, IF, ICC, E
Primary Accession	P98177
Reactivity	Human, Mouse
Host	Rabbit
Clonality	Polyclonal
Calculated MW	53684

Additional Information

Gene ID	4303
Other Names	FOXO4; AFX; AFX1; MLLT7; Forkhead box protein O4; Fork head domain transcription factor AFX1
Dilution	WB~~Western Blot: 1/500 - 1/2000. Immunohistochemistry: 1/100 - 1/300. ELISA: 1/20000. Not yet tested in other applications. IHC-P~~Western Blot: 1/500 - 1/2000. Immunohistochemistry: 1/100 - 1/300. ELISA: 1/20000. Not yet tested in other applications. IF~~1:50~200 ICC~~N/A E~~N/A
Format	Liquid in PBS containing 50% glycerol, 0.5% BSA and 0.09% (W/V) sodium azide.
Storage Conditions	-20°C

Protein Information

Name	FOXO4
Synonyms	AFX, AFX1, MLLT7
Function	Transcription factor involved in the regulation of the insulin signaling pathway. Binds to insulin-response elements (IREs) and can activate transcription of IGFBP1. Down-regulates expression of HIF1A and suppresses hypoxia-induced transcriptional activation of HIF1A-modulated genes. Also involved in negative regulation of the cell cycle. Involved in increased proteasome activity in embryonic stem cells (ESCs) by activating expression of PSMD11 in ESCs, leading to enhanced assembly of the 26S proteasome, followed by higher proteasome activity.
Cellular Location	Cytoplasm. Nucleus. Note=When phosphorylated, translocated from nucleus to cytoplasm. Dephosphorylation triggers nuclear translocation. Monoubiquitination increases nuclear localization. When deubiquitinated, translocated from nucleus to cytoplasm

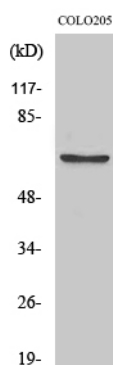
Tissue Location

Heart, brain, placenta, lung, liver, skeletal muscle, kidney and pancreas.
Isoform zeta is most abundant in the liver, kidney, and pancreas

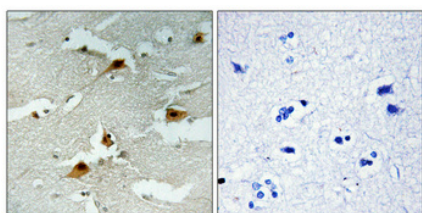
Background

Transcription factor involved in the regulation of the insulin signaling pathway. Binds to insulin-response elements (IREs) and can activate transcription of IGFBP1. Down-regulates expression of HIF1A and suppresses hypoxia-induced transcriptional activation of HIF1A-modulated genes. Also involved in negative regulation of the cell cycle. Involved in increased proteasome activity in embryonic stem cells (ESCs) by activating expression of PSMD11 in ESCs, leading to enhanced assembly of the 26S proteasome, followed by higher proteasome activity.

Images



Western Blot analysis of various cells using
Phospho-FoxO4 (S197) Polyclonal Antibody



Immunohistochemical analysis of paraffin-embedded
Human brain. Antibody was diluted at
1:100(4°,overnight). High-pressure and temperature
Tris-EDTA,pH8.0 was used for antigen retrieval. Negative
control (right) obtained from antibody was pre-absorbed by
immunogen peptide.

Please note: All products are 'FOR RESEARCH USE ONLY. NOT FOR USE IN DIAGNOSTIC OR THERAPEUTIC PROCEDURES'.