

Cyclin B1 (phospho Ser126) Polyclonal Antibody

Catalog # AP67011

Product Information

Application	WB, IHC-P, IF, ICC, E
Primary Accession	P14635
Reactivity	Human, Mouse, Rat
Host	Rabbit
Clonality	Polyclonal
Calculated MW	48337

Additional Information

Gene ID	891
Other Names	CCNB1; CCNB; G2/mitotic-specific cyclin-B1
Dilution	WB~~Western Blot: 1/500 - 1/2000. Immunohistochemistry: 1/100 - 1/300. ELISA: 1/5000. Not yet tested in other applications. IHC-P~~Western Blot: 1/500 - 1/2000. Immunohistochemistry: 1/100 - 1/300. ELISA: 1/5000. Not yet tested in other applications. IF~~1:50~200 ICC~~N/A E~~N/A
Format	Liquid in PBS containing 50% glycerol, 0.5% BSA and 0.09% (W/V) sodium azide.
Storage Conditions	-20°C

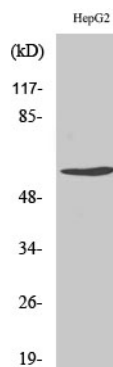
Protein Information

Name	CCNB1
Synonyms	CCNB
Function	Essential for the control of the cell cycle at the G2/M (mitosis) transition.
Cellular Location	Cytoplasm. Nucleus. Cytoplasm, cytoskeleton, microtubule organizing center, centrosome

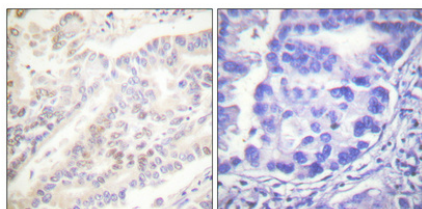
Background

Essential for the control of the cell cycle at the G2/M (mitosis) transition.

Images



Western Blot analysis of various cells using Phospho-Cyclin B1 (S126) Polyclonal Antibody



Immunohistochemical analysis of paraffin-embedded Human lung cancer. Antibody was diluted at 1:100(4°,overnight). High-pressure and temperature Tris-EDTA,pH8.0 was used for antigen retrieval. Negative contrl (right) obtaned from antibody was pre-absorbed by immunogen peptide.

Please note: All products are 'FOR RESEARCH USE ONLY. NOT FOR USE IN DIAGNOSTIC OR THERAPEUTIC PROCEDURES'.