

Cdc25A (phospho Ser75) Polyclonal Antibody

Catalog # AP66987

Product Information

Application	WB, IHC-P, IF, ICC, E
Primary Accession	P30304
Reactivity	Human, Mouse, Rat
Host	Rabbit
Clonality	Polyclonal
Calculated MW	59087

Additional Information

Gene ID	993
Other Names	CDC25A; M-phase inducer phosphatase 1; Dual specificity phosphatase Cdc25A
Dilution	WB~~Western Blot: 1/500 - 1/2000. Immunohistochemistry: 1/100 - 1/300. ELISA: 1/5000. Not yet tested in other applications. IHC-P~~N/A IF~~1:50~200 ICC~~N/A E~~N/A
Format	Liquid in PBS containing 50% glycerol, 0.5% BSA and 0.09% (W/V) sodium azide.
Storage Conditions	-20°C

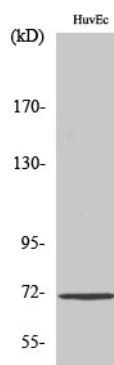
Protein Information

Name	CDC25A
Function	Tyrosine protein phosphatase which functions as a dosage- dependent inducer of mitotic progression (PubMed: 12676925 , PubMed: 14559997 , PubMed: 1836978 , PubMed: 20360007). Directly dephosphorylates CDK1 and stimulates its kinase activity (PubMed: 20360007). Also dephosphorylates CDK2 in complex with cyclin-E, in vitro (PubMed: 20360007).

Background

Tyrosine protein phosphatase which functions as a dosage-dependent inducer of mitotic progression. Directly dephosphorylates CDK1 and stimulates its kinase activity. Also dephosphorylates CDK2 in complex with cyclin E, in vitro.

Images



Western Blot analysis of various cells using
Phospho-Cdc25A (S75) Polyclonal Antibody

Please note: All products are 'FOR RESEARCH USE ONLY. NOT FOR USE IN DIAGNOSTIC OR THERAPEUTIC PROCEDURES'.