

# PAX4 Antibody (Center)

Purified Rabbit Polyclonal Antibody (Pab)

Catalog # AP6690C

## Product Information

---

<b>Application</b>	WB, IHC-P, FC, E
<b>Primary Accession</b>	<a href="#">O43316</a>
<b>Other Accession</b>	<a href="#">P32115</a>
<b>Reactivity</b>	Human, Rat, Mouse
<b>Predicted</b>	Mouse
<b>Host</b>	Rabbit
<b>Clonality</b>	Polyclonal
<b>Isotype</b>	Rabbit IgG
<b>Clone Names</b>	RB20216
<b>Calculated MW</b>	37833
<b>Antigen Region</b>	171-200

## Additional Information

---

<b>Other Names</b>	Paired box protein Pax-4, PAX4
<b>Target/Specificity</b>	This PAX4 antibody is generated from rabbits immunized with a KLH conjugated synthetic peptide between 171-200 amino acids from the Central region of human PAX4.
<b>Dilution</b>	WB~~1:1000 IHC-P~~1:100~500 FC~~1:10~50 E~~Use at an assay dependent concentration.
<b>Format</b>	Purified polyclonal antibody supplied in PBS with 0.09% (W/V) sodium azide. This antibody is prepared by Saturated Ammonium Sulfate (SAS) precipitation followed by dialysis against PBS.
<b>Storage</b>	Maintain refrigerated at 2-8°C for up to 2 weeks. For long term storage store at -20°C in small aliquots to prevent freeze-thaw cycles.
<b>Precautions</b>	PAX4 Antibody (Center) is for research use only and not for use in diagnostic or therapeutic procedures.

## Protein Information

---

<b>Name</b>	PAX4
<b>Function</b>	Plays an important role in the differentiation and development of pancreatic islet beta cells. Transcriptional repressor that binds to a common element in the glucagon, insulin and somatostatin promoters. Competes with PAX6 for this same promoter binding site. Isoform 2 appears to be a

dominant negative form antagonizing PAX4 transcriptional activity.

## Cellular Location

Nucleus.

## Background

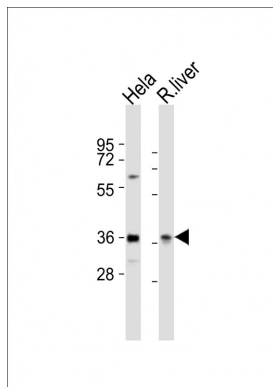
PAX4 is a member of the paired box (PAX) family of transcription factors. These proteins play critical roles during fetal development and cancer growth. The paired box 4 gene is involved in pancreatic islet development and mouse studies have demonstrated a role for this gene in differentiation of insulin-producing beta cells.

## References

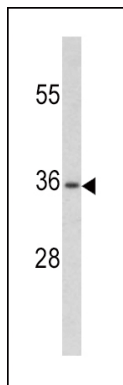
Hata,S., Int. J. Oncol. 33 (5), 1065-1071 (2008)

Zhang,Y., Diabetes Res. Clin. Pract. 81 (3), 365-369 (2008)

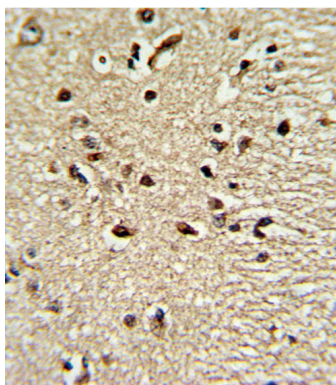
## Images



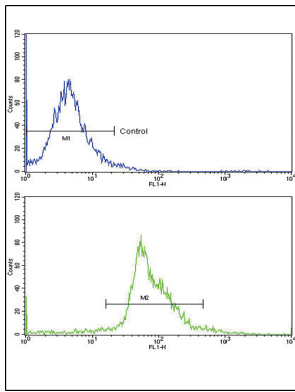
All lanes : Anti-PAX4 Antibody (Center) at 1:2000 dilution  
Lane 1: Hela whole cell lysates Lane 2: rat liver lysates  
Lysates/proteins at 20 µg per lane. Secondary Goat Anti-Rabbit IgG, (H+L), Peroxidase conjugated at 1/10000 dilution Predicted band size : 38 kDa Blocking/Dilution buffer: 5% NFDM/TBST.



Western blot analysis of PAX4 antibody (Center) (RB20216) in CEM cell line lysates (35ug/lane). PAX4 (arrow) was detected using the purified Pab.



Formalin-fixed and paraffin-embedded human brain tissue reacted with PAX4 Antibody (Center), which was peroxidase-conjugated to the secondary antibody, followed by DAB staining. This data demonstrates the use of this antibody for immunohistochemistry; clinical relevance has not been evaluated.



Flow cytometric analysis of widr cells using PAX4 Antibody (Center)(bottom histogram) compared to a negative control cell (top histogram)FITC-conjugated goat-anti-rabbit secondary antibodies were used for the analysis.

Please note: All products are 'FOR RESEARCH USE ONLY. NOT FOR USE IN DIAGNOSTIC OR THERAPEUTIC PROCEDURES'.