

GLS2 Antibody (C-term E513)

Affinity Purified Rabbit Polyclonal Antibody (Pab)
Catalog # AP6650D

Product Information

Application	WB, IHC-P-Leica, E
Primary Accession	Q9UI32
Other Accession	P28492 , Q571F8 , NP_037399.2
Reactivity	Human, Rat, Mouse
Predicted	Rat
Host	Rabbit
Clonality	Polyclonal
Isotype	Rabbit IgG
Clone Names	RB20072
Antigen Region	498-524

Additional Information

Other Names	Glutaminase liver isoform, mitochondrial, GLS, L-glutaminase, L-glutamine amidohydrolase, GLS2, GA
Target/Specificity	This GLS2 antibody is generated from rabbits immunized with a KLH conjugated synthetic peptide between 498-524 amino acids of human GLS2.
Dilution	WB~~1:1000 IHC-P-Leica~~1:500 E~~Use at an assay dependent concentration.
Format	Purified polyclonal antibody supplied in PBS with 0.09% (W/V) sodium azide. This antibody is purified through a protein A column, followed by peptide affinity purification.
Storage	Maintain refrigerated at 2-8°C for up to 2 weeks. For long term storage store at -20°C in small aliquots to prevent freeze-thaw cycles.
Precautions	GLS2 Antibody (C-term E513) is for research use only and not for use in diagnostic or therapeutic procedures.

Protein Information

Background

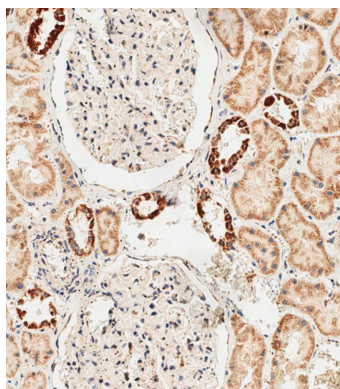
The protein encoded by this gene is a mitochondrial phosphate-activated glutaminase that catalyzes the hydrolysis of glutamine to stoichiometric amounts of glutamate and ammonia. This protein is functionally similar to the kidney glutaminase but is a little smaller in size. Originally thought to be liver-specific, this protein has been found in other tissues as well. At least one transcribed pseudogene has been found for this

gene. [provided by RefSeq].

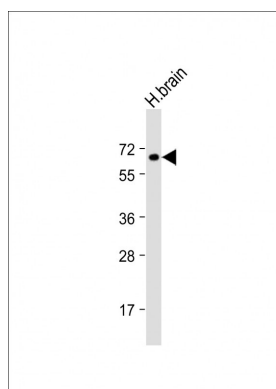
References

- Hu, W., et al. Proc. Natl. Acad. Sci. U.S.A. 107(16):7455-7460(2010)
Suzuki, S., et al. Proc. Natl. Acad. Sci. U.S.A. 107(16):7461-7466(2010)
Szeliga, M., et al. Glia 57(9):1014-1023(2009)
Tian, C., et al. J. Neurochem. 105(3):994-1005(2008)
Maeshima, H., et al. Prog. Neuropsychopharmacol. Biol. Psychiatry 31(7):1410-1418(2007)

Images



Immunohistochemical analysis of paraffin-embedded human kidney tissue using AP6650D performed on the Leica® BOND RXm. Samples were incubated with primary antibody(1/500) for 1 hours at room temperature. A undiluted biotinylated CRF Anti-Polyvalent HRP Polymer antibody was used as the secondary antibody.



Anti-GLS2 Antibody (C-term E513) at 1:2000 dilution + Human brain lysates/proteins at 20 µg per lane. Secondary Goat Anti-Rabbit IgG, (H+L), Peroxidase conjugated at 1/10000 dilution. Predicted band size : 66 kDa Blocking/Dilution buffer: 5% NFD/MTBST.

Citations

- [Liver-Type Glutaminase GLS2 Is a Druggable Metabolic Node in Luminal-Subtype Breast Cancer](#)
- [MYC oncogene overexpression drives renal cell carcinoma in a mouse model through glutamine metabolism.](#)
- [Loss of tyrosine catabolic enzyme HPD promotes glutamine anaplerosis through mTOR signaling in liver cancer](#)
- [Mitochondrial GCN5L1 regulates glutaminase acetylation and hepatocellular carcinoma](#)

Please note: All products are 'FOR RESEARCH USE ONLY. NOT FOR USE IN DIAGNOSTIC OR THERAPEUTIC PROCEDURES'.