

# CLUAP1 Antibody (C-term)

Purified Rabbit Polyclonal Antibody (Pab)

Catalog # AP6632b

## Product Information

---

Application	WB, IHC-P, FC, E
Primary Accession	<a href="#">Q96AJ1</a>
Reactivity	Human, Mouse
Host	Rabbit
Clonality	Polyclonal
Isotype	Rabbit IgG
Clone Names	RB19800
Calculated MW	48125
Antigen Region	379-408

## Additional Information

---

Gene ID	23059
Other Names	Clusterin-associated protein 1, Qilin, CLUAP1, KIAA0643
Target/Specificity	This CLUAP1 antibody is generated from rabbits immunized with a KLH conjugated synthetic peptide between 379-408 amino acids from the C-terminal region of human CLUAP1.
Dilution	WB~~1:1000 IHC-P~~1:100~500 FC~~1:10~50 E~~Use at an assay dependent concentration.
Format	Purified polyclonal antibody supplied in PBS with 0.09% (W/V) sodium azide. This antibody is prepared by Saturated Ammonium Sulfate (SAS) precipitation followed by dialysis against PBS.
Storage	Maintain refrigerated at 2-8°C for up to 2 weeks. For long term storage store at -20°C in small aliquots to prevent freeze-thaw cycles.
Precautions	CLUAP1 Antibody (C-term) is for research use only and not for use in diagnostic or therapeutic procedures.

## Protein Information

---

Name	CLUAP1
Synonyms	KIAA0643
Function	Required for cilia biogenesis. Appears to function within the multiple intraflagellar transport complex B (IFT-B). Key regulator of hedgehog

signaling.

**Cellular Location**

Cell projection, cilium. Nucleus

**Tissue Location**

Expressed in testis, thyroid and trachea and to a lower extent in spinal cord and adrenal gland. Highly expressed in colon cancer and osteosarcoma cell lines.

## Background

---

CLUAP1 may play a role in cell proliferation or apoptosis.

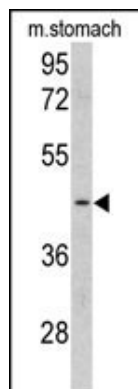
## References

---

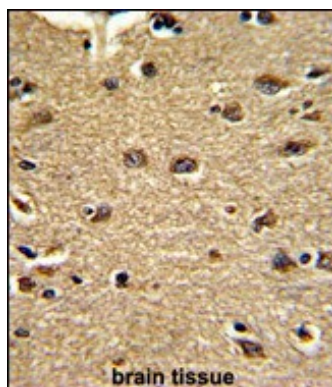
Ishikura,H., Int. J. Oncol. 30 (2), 461-467 (2007)  
Takahashi,M., Oncogene 23 (57), 9289-9294 (2004)

## Images

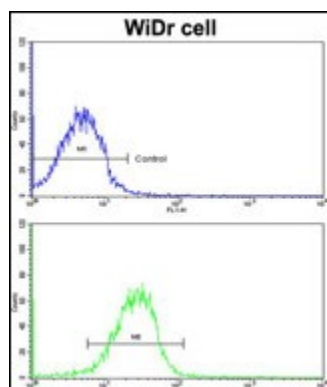
---



Western blot analysis of CLUAP1 antibody (C-term) (Cat. #AP6632b) in mouse stomach tissue lysates (35ug/lane). CLUAP1 (arrow) was detected using the purified Pab.



Formalin-fixed and paraffin-embedded human brain tissue reacted with CLUAP1 Antibody (C-term), which was peroxidase-conjugated to the secondary antibody, followed by DAB staining. This data demonstrates the use of this antibody for immunohistochemistry; clinical relevance has not been evaluated.



Flow cytometric analysis of MDA-231 cells using CLUAP1 antibody (C-term)(bottom histogram) compared to a negative control cell (top histogram). FITC-conjugated goat-anti-rabbit secondary antibodies were used for the analysis.

Please note: All products are 'FOR RESEARCH USE ONLY. NOT FOR USE IN DIAGNOSTIC OR THERAPEUTIC PROCEDURES'.