

CFHL1 Antibody (C-term)

Purified Rabbit Polyclonal Antibody (Pab)

Catalog # AP6615b

Product Information

Application	WB, IHC-P, FC, E
Primary Accession	Q03591
Reactivity	Human
Host	Rabbit
Clonality	Polyclonal
Isotype	Rabbit IgG
Clone Names	RB19786
Calculated MW	37651
Antigen Region	270-297

Additional Information

Gene ID	3078
Other Names	Complement factor H-related protein 1, FHR-1, H factor-like protein 1, H-factor-like 1, H36, CFHR1, CFHL, CFHL1, CFHL1P, CFHR1P, FHR1, HFL1, HFL2
Target/Specificity	This CFHL1 antibody is generated from rabbits immunized with a KLH conjugated synthetic peptide between 270-297 amino acids from the C-terminal region of human CFHL1.
Dilution	WB~~1:1000 IHC-P~~1:100~500 FC~~1:10~50 E~~Use at an assay dependent concentration.
Format	Purified polyclonal antibody supplied in PBS with 0.09% (W/V) sodium azide. This antibody is prepared by Saturated Ammonium Sulfate (SAS) precipitation followed by dialysis against PBS.
Storage	Maintain refrigerated at 2-8°C for up to 2 weeks. For long term storage store at -20°C in small aliquots to prevent freeze-thaw cycles.
Precautions	CFHL1 Antibody (C-term) is for research use only and not for use in diagnostic or therapeutic procedures.

Protein Information

Name	CFHR1
Synonyms	CFHL, CFHL1, CFHL1P, CFHR1P, FHR1, HFL1,
Function	Involved in complement regulation. The dimerized forms have avidity for

tissue-bound complement fragments and efficiently compete with the physiological complement inhibitor CFH. Can associate with lipoproteins and may play a role in lipid metabolism.

Cellular Location

Secreted.

Tissue Location

Expressed by the liver and secreted in plasma.

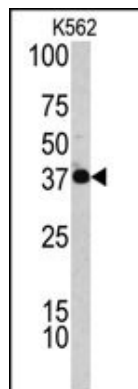
Background

CFHL1 might be involved in complement regulation. The protein can associate with lipoproteins and may play a role in lipid metabolism.

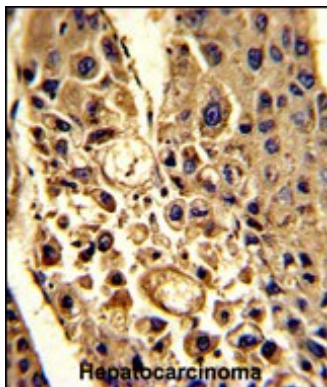
References

Grosskinsky,S., PLoS ONE 4 (3), E4858 (2009)
Siegel,C., J. Biol. Chem. 283 (50), 34855-34863 (2008)

Images

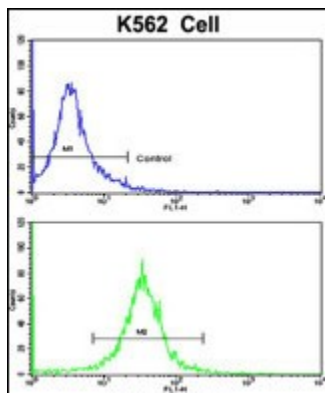


Western blot analysis of CFHL1 antibody (C-term) (Cat. #AP6615b) in K562 cell line lysates (35ug/lane). CFHL1 (arrow) was detected using the purified Pab.



Formalin-fixed and paraffin-embedded human hepatocarcinoma with CFHL1 Antibody (C-term), which was peroxidase-conjugated to the secondary antibody, followed by DAB staining. This data demonstrates the use of this antibody for immunohistochemistry; clinical relevance has not been evaluated.

Flow cytometric analysis of K562 cells using CFHL1 Antibody (C-term)(bottom histogram) compared to a negative control cell (top histogram). FITC-conjugated goat-anti-rabbit secondary antibodies were used for the analysis.



Please note: All products are 'FOR RESEARCH USE ONLY. NOT FOR USE IN DIAGNOSTIC OR THERAPEUTIC PROCEDURES'.