

# CDCA3 Antibody (N-term)

Purified Rabbit Polyclonal Antibody (Pab)

Catalog # AP6614a

## Product Information

---

|                          |                        |
|--------------------------|------------------------|
| <b>Application</b>       | WB, IHC-P, FC, E       |
| <b>Primary Accession</b> | <a href="#">Q99618</a> |
| <b>Reactivity</b>        | Human, Mouse           |
| <b>Host</b>              | Rabbit                 |
| <b>Clonality</b>         | Polyclonal             |
| <b>Isotype</b>           | Rabbit IgG             |
| <b>Clone Names</b>       | RB19773                |
| <b>Calculated MW</b>     | 28998                  |
| <b>Antigen Region</b>    | 41-69                  |

## Additional Information

---

|                           |   |
|---------------------------|---|
| <b>Gene ID</b>            | 83461   |
| <b>Other Names</b>        | Cell division cycle-associated protein 3, Gene-rich cluster protein C8, Trigger of mitotic entry protein 1, TOME-1, CDCA3, C8, GRCC8, TOME1   |
| <b>Target/Specificity</b> | This CDCA3 antibody is generated from rabbits immunized with a KLH conjugated synthetic peptide between 41-69 amino acids from the N-terminal region of human CDCA3.                      |
| <b>Dilution</b>           | WB~~1:1000 IHC-P~~1:100~500 FC~~1:10~50 E~~Use at an assay dependent concentration.   |
| <b>Format</b>             | Purified polyclonal antibody supplied in PBS with 0.09% (W/V) sodium azide. This antibody is prepared by Saturated Ammonium Sulfate (SAS) precipitation followed by dialysis against PBS. |
| <b>Storage</b>            | Maintain refrigerated at 2-8°C for up to 2 weeks. For long term storage store at -20°C in small aliquots to prevent freeze-thaw cycles.   |
| <b>Precautions</b>        | CDCA3 Antibody (N-term) is for research use only and not for use in diagnostic or therapeutic procedures.   |

## Protein Information

---

|                 |  |
|-----------------|--|
| <b>Name</b>     | CDCA3  |
| <b>Synonyms</b> | C8, GRCC8, TOME1   |
| <b>Function</b> | F-box-like protein which is required for entry into mitosis. Acts by |

participating in E3 ligase complexes that mediate the ubiquitination and degradation of WEE1 kinase at G2/M phase (By similarity).

## Cellular Location

Cytoplasm, cytosol.

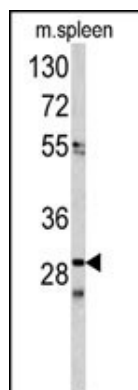
## Background

CDCA3 is a F-box-like protein which is required for entry into mitosis. It acts by participating to E3 ligase complexes that mediate the ubiquitination and degradation of WEE1 kinase at G2/M phase.

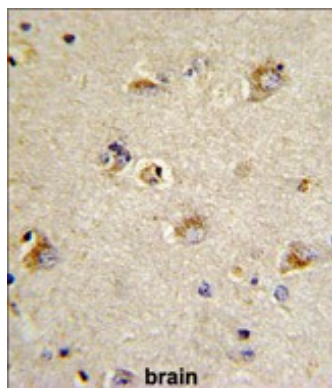
## References

Daub H., Mol. Cell 31:438-448(2008)

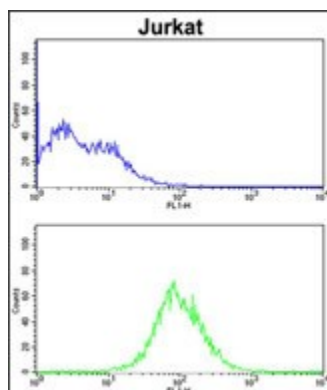
## Images



Western blot analysis of CDCA3 antibody (N-term) (Cat. #AP6614a) in mouse spleen tissue lysates(35ug/lane). CDCA3 (arrow) was detected using the purified Pab.



Formalin-fixed and paraffin-embedded human brain tissue reacted with CDCA3 Antibody (N-term), which was peroxidase-conjugated to the secondary antibody, followed by DAB staining. This data demonstrates the use of this antibody for immunohistochemistry; clinical relevance has not been evaluated.



CDCA3 Antibody (N-term) (Cat. #AP6614a) flow cytometric analysis of Jurkat cells (bottom histogram) compared to a negative control cell (top histogram).FITC-conjugated goat-anti-rabbit secondary antibodies were used for the analysis.