

# ALB Antibody (C-term)

Purified Rabbit Polyclonal Antibody (Pab)

Catalog # AP6540B

## Product Information

---

<b>Application</b>	IHC-P-Leica, IF, FC, WB, E
<b>Primary Accession</b>	<a href="#">P02768</a>
<b>Other Accession</b>	<a href="#">A2V9Z4</a>
<b>Reactivity</b>	Human, Rat, Mouse
<b>Predicted</b>	Monkey
<b>Host</b>	Rabbit
<b>Clonality</b>	Polyclonal
<b>Isotype</b>	Rabbit IgG
<b>Calculated MW</b>	69367
<b>Antigen Region</b>	540-569

## Additional Information

---

<b>Gene ID</b>	213
<b>Other Names</b>	Serum albumin, ALB
<b>Target/Specificity</b>	This ALB antibody is generated from rabbits immunized with a KLH conjugated synthetic peptide between 540-569 amino acids from the C-terminal region of human ALB.
<b>Dilution</b>	IHC-P-Leica~~1:500 IF~~1:10~50 FC~~1:10~50 WB~~1:1000 E~~Use at an assay dependent concentration.
<b>Format</b>	Purified polyclonal antibody supplied in PBS with 0.09% (W/V) sodium azide. This antibody is purified through a protein A column, followed by peptide affinity purification.
<b>Storage</b>	Maintain refrigerated at 2-8°C for up to 2 weeks. For long term storage store at -20°C in small aliquots to prevent freeze-thaw cycles.
<b>Precautions</b>	ALB Antibody (C-term) is for research use only and not for use in diagnostic or therapeutic procedures.

## Protein Information

---

<b>Name</b>	ALB
<b>Function</b>	Binds water, Ca(2+), Na(+), K(+), fatty acids, hormones, bilirubin and drugs (Probable). Its main function is the regulation of the colloidal osmotic pressure of blood (Probable). Major zinc transporter in plasma, typically binds

about 80% of all plasma zinc (PubMed:[19021548](#)). Major calcium and magnesium transporter in plasma, binds approximately 45% of circulating calcium and magnesium in plasma (By similarity). Potentially has more than two calcium-binding sites and might additionally bind calcium in a non-specific manner (By similarity). The shared binding site between zinc and calcium at residue Asp-273 suggests a crosstalk between zinc and calcium transport in the blood (By similarity). The rank order of affinity is zinc > calcium > magnesium (By similarity). Binds to the bacterial siderophore enterobactin and inhibits enterobactin-mediated iron uptake of E.coli from ferric transferrin, and may thereby limit the utilization of iron and growth of enteric bacteria such as E.coli (PubMed:[6234017](#)). Does not prevent iron uptake by the bacterial siderophore aerobactin (PubMed:[6234017](#)).

**Cellular Location** Secreted.

**Tissue Location** Plasma.

## Background

---

Albumin is a soluble, monomeric protein which comprises about one-half of the blood serum protein. Albumin functions primarily as a carrier protein for steroids, fatty acids, and thyroid hormones and plays a role in stabilizing extracellular fluid volume. Albumin is a globular unglycosylated serum protein of molecular weight 65,000. Albumin is synthesized in the liver as preproalbumin which has an N-terminal peptide that is removed before the nascent protein is released from the rough endoplasmic reticulum. The product, proalbumin, is in turn cleaved in the Golgi vesicles to produce the secreted albumin.

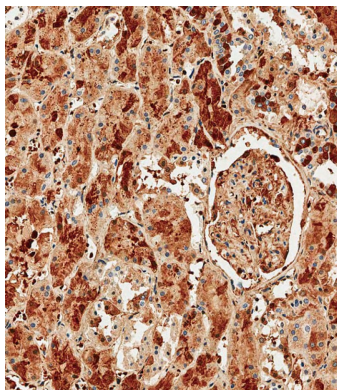
## References

---

Liu,Z., Biophys. J. 96 (10), 3917-3925 (2009)  
Minchiotti,L., Hum. Mutat. 29 (8), 1007-1016 (2008)

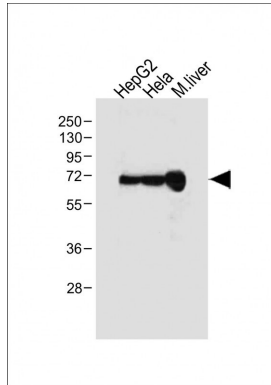
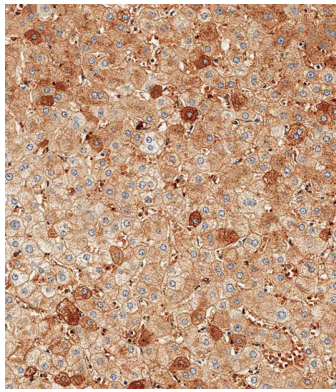
## Images

---

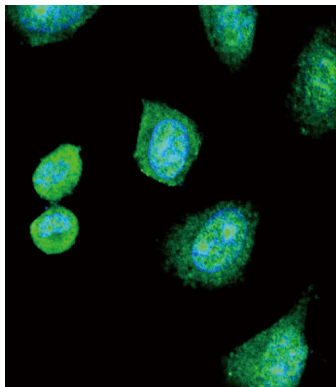


Immunohistochemical analysis of paraffin-embedded Human kidney tissue using AP6540b performed on the Leica® BOND RXm. Tissue was fixed with formaldehyde at room temperature, antigen retrieval was by heat mediation with a EDTA buffer (pH9. 0). Samples were incubated with primary antibody(1:500) for 1 hours at room temperature. A undiluted biotinylated CRF Anti-Polyvalent HRP Polymer antibody was used as the secondary antibody.

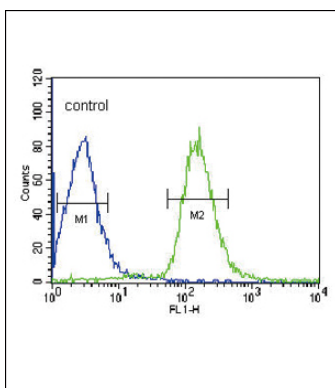
Immunohistochemical analysis of paraffin-embedded Human liver tissue using AP6540b performed on the Leica® BOND RXm. Tissue was fixed with formaldehyde at room temperature, antigen retrieval was by heat mediation with a EDTA buffer (pH9. 0). Samples were incubated with primary antibody(1:500) for 1 hours at room temperature. A undiluted biotinylated CRF Anti-Polyvalent HRP Polymer antibody was used as the secondary antibody.



All lanes : Anti-ALB Antibody (C-term) at 1:1000 dilution  
 Lane 1: HepG2 whole cell lysate Lane 2: HeLa whole cell lysate Lane 3: Mouse liver tissue lysate Lysates/proteins at 20 µg per lane. Secondary Goat Anti-Rabbit IgG, (H+L), Peroxidase conjugated at 1/10000 dilution. Predicted band size : 69 kDa Blocking/Dilution buffer: 5% NFDM/TBST.



Confocal immunofluorescent analysis of ALB Antibody (C-term)(Cat. #AP6540b) with 293 cell followed by Alexa Fluor 488-conjugated goat anti-rabbit IgG (green). DAPI was used to stain the cell nuclear (blue).



ALB Antibody (C-term) (Cat. #AP6540b) flow cytometric analysis of HepG2 cells (right histogram) compared to a negative control cell (left histogram). FITC-conjugated goat-anti-rabbit secondary antibodies were used for the analysis.

## Citations

- [Gelsolin decreases actin toxicity and inflammation in murine multiple sclerosis.](#)