

# ORM1 Antibody (C-term)

Purified Rabbit Polyclonal Antibody (Pab)

Catalog # AP6536b

## Product Information

---

<b>Application</b>	WB, FC, E
<b>Primary Accession</b>	<a href="#">P02763</a>
<b>Reactivity</b>	Human
<b>Host</b>	Rabbit
<b>Clonality</b>	Polyclonal
<b>Isotype</b>	Rabbit IgG
<b>Clone Names</b>	RB18448
<b>Calculated MW</b>	23540
<b>Antigen Region</b>	152-180

## Additional Information

---

<b>Gene ID</b>	5004
<b>Other Names</b>	Alpha-1-acid glycoprotein 1, AGP 1, Orosomucoid-1, OMD 1, ORM1, AGP1
<b>Target/Specificity</b>	This ORM1 antibody is generated from rabbits immunized with a KLH conjugated synthetic peptide between 152-180 amino acids from the C-terminal region of human ORM1.
<b>Dilution</b>	WB~~1:1000 FC~~1:10~50 E~~Use at an assay dependent concentration.
<b>Format</b>	Purified polyclonal antibody supplied in PBS with 0.09% (W/V) sodium azide. This antibody is prepared by Saturated Ammonium Sulfate (SAS) precipitation followed by dialysis against PBS.
<b>Storage</b>	Maintain refrigerated at 2-8°C for up to 2 weeks. For long term storage store at -20°C in small aliquots to prevent freeze-thaw cycles.
<b>Precautions</b>	ORM1 Antibody (C-term) is for research use only and not for use in diagnostic or therapeutic procedures.

## Protein Information

---

<b>Name</b>	ORM1
<b>Synonyms</b>	AGP1
<b>Function</b>	Functions as a transport protein in the blood stream. Binds various ligands in the interior of its beta-barrel domain. Also binds synthetic drugs and influences their distribution and availability in the body. Appears to function

in modulating the activity of the immune system during the acute-phase reaction.

**Cellular Location**

Secreted.

**Tissue Location**

Expressed by the liver and secreted in plasma.

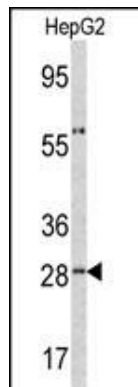
## Background

ORM1 is a key acute phase plasma protein. Because of its increase due to acute inflammation, this protein is classified as an acute-phase reactant. The specific function of this protein has not yet been determined; however, it may be involved in aspects of immunosuppression.

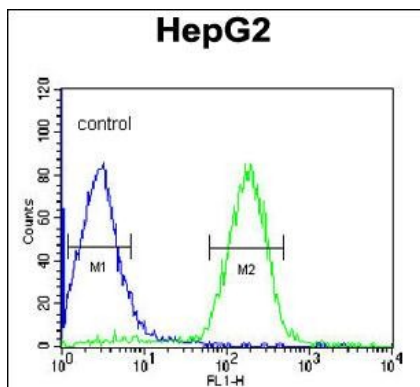
## References

Harley,J., J. Psychopharmacol. (Oxford) (2009)  
Budai,L., Anal Bioanal Chem 393 (3), 991-998 (2009)

## Images



Western blot analysis of ORM1 antibody (C-term) (Cat.# AP6536b) in HepG2 cell line lysates (35ug/lane). ORM1 (arrow) was detected using the purified Pab.



ORM1 Antibody (C-term) (Cat. #AP6536b) flow cytometric analysis of HepG2 cells (right histogram) compared to a negative control cell (left histogram).FITC-conjugated goat-anti-rabbit secondary antibodies were used for the analysis.

Please note: All products are 'FOR RESEARCH USE ONLY. NOT FOR USE IN DIAGNOSTIC OR THERAPEUTIC PROCEDURES'.