

Ghrelin Receptor Polyclonal Antibody

Catalog # AP63685

Product Information

Application	WB, IHC-P, IF, ICC
Primary Accession	Q92847
Reactivity	Human, Rat, Mouse
Host	Rabbit
Clonality	Polyclonal
Calculated MW	41329

Additional Information

Gene ID	2693
Other Names	Growth hormone secretagogue receptor type 1 (GHS-R) (GH-releasing peptide receptor) (GHRP) (Ghrelin receptor)
Dilution	WB~~WB 1:1000-2000, IHC 1:100-200 IHC-P~~WB 1:1000-2000, IHC 1:100-200 IF~~1:50~200 ICC~~N/A
Format	Liquid in PBS containing 50% glycerol, 0.5% BSA and 0.09% (W/V) sodium azide.
Storage Conditions	-20°C

Protein Information

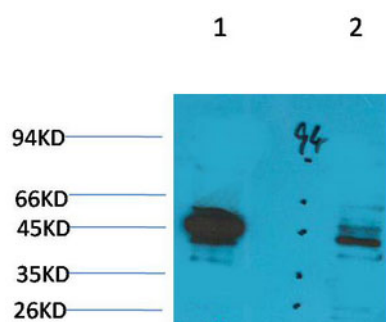
Name	GHSR
Function	G-protein-coupled receptor specific to ghrelin, an appetite- regulating peptide hormone commonly found in stomach (PubMed: 35027551 , PubMed: 39833471). Upon activation, stimulates appetite and promotes growth hormone secretion (PubMed: 11322507 , PubMed: 10604470 , PubMed: 35027551 , PubMed: 39833471). Also binds other growth hormone releasing peptides (GHRP) (e.g. Met-enkephalin and GHRP-6) as well as non-peptide, low molecular weight secretagogues (e.g. L-692, 429, MK- 0677, adenosine) (PubMed: 11322507 , PubMed: 10604470).
Cellular Location	Cell membrane; Multi-pass membrane protein
Tissue Location	Pituitary and hypothalamus.

Background

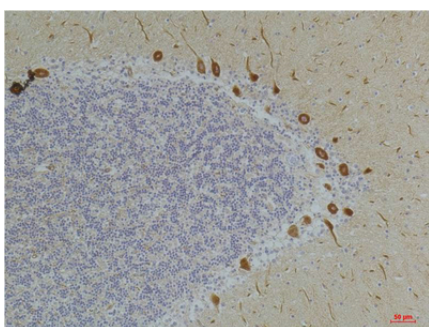
Receptor for ghrelin, coupled to G-alpha-11 proteins. Stimulates growth hormone secretion. Binds also

other growth hormone releasing peptides (GHRP) (e.g. Met-enkephalin and GHRP-6) as well as non-peptide, low molecular weight secretagogues (e.g. L-692,429, MK-0677, adenosine).

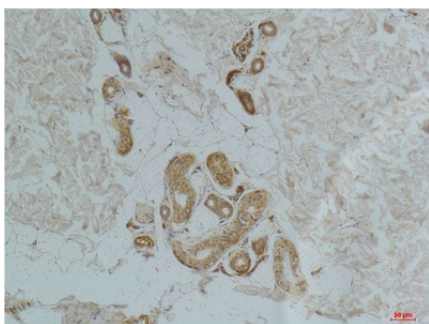
Images



Western blot analysis of 1) Rat Liver Tissue, 2) Jurkat with Ghrelin Receptor Rabbit pAb diluted at 1:2,000.



Immunohistochemical analysis of paraffin-embedded Human Brain Tissue using Ghrelin Receptor Rabbit pAb diluted at 1:200.



Immunohistochemical analysis of paraffin-embedded Human Skin Tissue using Ghrelin Receptor Rabbit pAb diluted at 1:200.

Please note: All products are 'FOR RESEARCH USE ONLY. NOT FOR USE IN DIAGNOSTIC OR THERAPEUTIC PROCEDURES'.