

Endothelin B Receptor Polyclonal Antibody

Catalog # AP63675

Product Information

Application	IHC-P
Primary Accession	P24530
Reactivity	Human, Rat, Mouse
Host	Rabbit
Clonality	Polyclonal
Calculated MW	49644

Additional Information

Gene ID	1910
Other Names	Endothelin B receptor (ET-B) (ET-BR) (Endothelin receptor non-selective type)
Dilution	IHC-P~~IHC 1:100-200
Format	Liquid in PBS containing 50% glycerol, 0.5% BSA and 0.09% (W/V) sodium azide.
Storage Conditions	-20°C

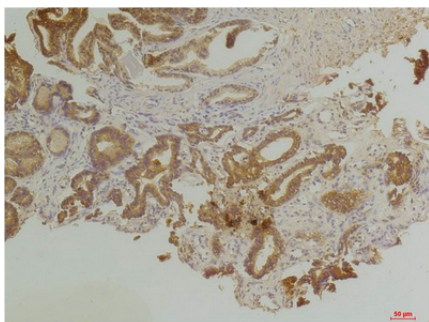
Protein Information

Name	EDNRB (HGNC:3180)
Synonyms	ETRB
Function	Non-specific receptor for endothelin 1, 2, and 3. Mediates its action by association with G proteins that activate a phosphatidylinositol-calcium second messenger system.
Cellular Location	Cell membrane; Multi-pass membrane protein. Note=internalized after activation by endothelins.
Tissue Location	Expressed in placental stem villi vessels, but not in cultured placental villi smooth muscle cells

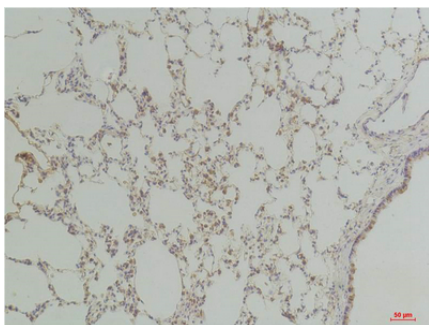
Background

Non-specific receptor for endothelin 1, 2, and 3. Mediates its action by association with G proteins that activate a phosphatidylinositol-calcium second messenger system.

Images



Immunohistochemical analysis of paraffin-embedded Human Prostate Tissue using Endothelin B Receptor Rabbit pAb diluted at 1:200.



Immunohistochemical analysis of paraffin-embedded Rat Lung Tissue using Endothelin B Receptor Rabbit pAb diluted at 1:200.

Please note: All products are 'FOR RESEARCH USE ONLY. NOT FOR USE IN DIAGNOSTIC OR THERAPEUTIC PROCEDURES'.