

# CNTF Polyclonal Antibody

Catalog # AP63672

## Product Information

---

|                          |                        |
|--------------------------|------------------------|
| <b>Application</b>       | WB                     |
| <b>Primary Accession</b> | <a href="#">P26441</a> |
| <b>Reactivity</b>        | Human, Rat, Mouse      |
| <b>Host</b>              | Rabbit                 |
| <b>Clonality</b>         | Polyclonal             |
| <b>Calculated MW</b>     | 22931                  |

## Additional Information

---

|                           |   |
|---------------------------|---|
| <b>Gene ID</b>            | 1270  |
| <b>Other Names</b>        | CNTF; Ciliary neurotrophic factor; CNTF                                       |
| <b>Dilution</b>           | WB~~WB 1:500-1000   |
| <b>Format</b>             | Liquid in PBS containing 50% glycerol, 0.5% BSA and 0.09% (W/V) sodium azide. |
| <b>Storage Conditions</b> | -20°C   |

## Protein Information

---

|                          |  |
|--------------------------|--|
| <b>Name</b>              | CNTF   |
| <b>Function</b>          | CNTF is a survival factor for various neuronal cell types. Seems to prevent the degeneration of motor axons after axotomy. |
| <b>Cellular Location</b> | Cytoplasm.   |
| <b>Tissue Location</b>   | Nervous system.  |

## Background

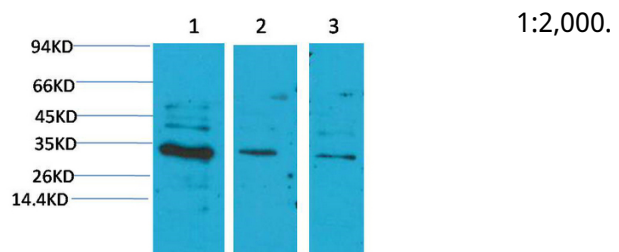
---

CNTF is a survival factor for various neuronal cell types. Seems to prevent the degeneration of motor axons after axotomy.

## Images

---

Western blot analysis of 1) Hela, 2) Mouse Brain Tissue, 3) Rat Brain Tissue with CNTF Rabbit pAb diluted at



Please note: All products are 'FOR RESEARCH USE ONLY. NOT FOR USE IN DIAGNOSTIC OR THERAPEUTIC PROCEDURES'.