

HSPB8/HSP22 Monoclonal Antibody(2C3)

Catalog # AP63653

Product Information

Application	WB
Primary Accession	Q9UJY1
Reactivity	Human, Rat, Mouse
Host	Mouse
Clonality	Monoclonal
Calculated MW	21604

Additional Information

Gene ID	26353
Other Names	HSPB8; CRYAC; E2IG1; HSP22; PP1629; Heat shock protein beta-8; HspB8; Alpha-crystallin C chain; E2-induced gene 1 protein; Protein kinase H11; Small stress protein-like protein HSP22
Dilution	WB~~WB 1:1000-2000
Format	Liquid in PBS containing 50% glycerol, 0.5% BSA and 0.09% (W/V) sodium azide.
Storage Conditions	-20°C

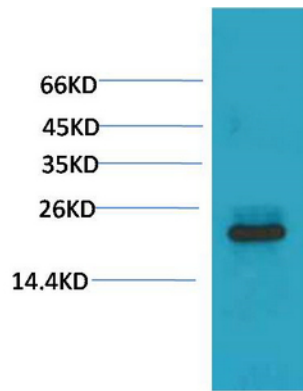
Protein Information

Name	HSPB8
Synonyms	CRYAC, E2IG1, HSP22
Function	Involved in the chaperone-assisted selective autophagy (CASA), a crucial process for protein quality control, particularly in mechanical strained cells and tissues such as muscle. Displays temperature-dependent chaperone activity.
Cellular Location	Cytoplasm. Nucleus Note=Translocates to nuclear foci during heat shock
Tissue Location	Predominantly expressed in skeletal muscle and heart.

Background

Displays temperature-dependent chaperone activity.

Images



Western blot analysis of 293T with HSPB8/HSP22 Mouse mAb diluted at 1:2,000.

Please note: All products are 'FOR RESEARCH USE ONLY. NOT FOR USE IN DIAGNOSTIC OR THERAPEUTIC PROCEDURES'.