

Flotillin-2 Polyclonal Antibody

Catalog # AP63618

Product Information

Application	WB, IHC-P
Primary Accession	Q14254
Reactivity	Human, Rat, Mouse
Host	Rabbit
Clonality	Polyclonal
Calculated MW	47064

Additional Information

Gene ID	2319
Other Names	Flotillin-2 (Epidermal surface antigen) (ESA) (Membrane component chromosome 17 surface marker 1)
Dilution	WB~~Western Blot: 1/500 - 1/2000. Immunohistochemistry: 1/100 - 1/300. ELISA: 1/40000. Not yet tested in other applications. IHC-P~~Western Blot: 1/500 - 1/2000. Immunohistochemistry: 1/100 - 1/300. ELISA: 1/40000. Not yet tested in other applications.
Format	Liquid in PBS containing 50% glycerol, 0.5% BSA and 0.09% (W/V) sodium azide.
Storage Conditions	-20°C

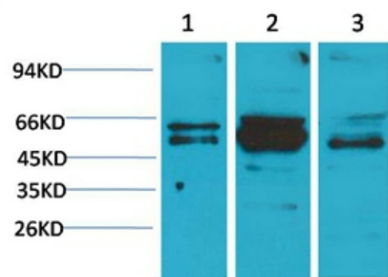
Protein Information

Name	FLOT2
Synonyms	ESA1, M17S1
Function	May act as a scaffolding protein within caveolar membranes, functionally participating in formation of caveolae or caveolae-like vesicles. May be involved in epidermal cell adhesion and epidermal structure and function.
Cellular Location	Cell membrane; Peripheral membrane protein. Membrane, caveola; Peripheral membrane protein. Endosome Membrane; Lipid-anchor. Note=Membrane- associated protein of caveolae
Tissue Location	In skin, expressed in epidermis and epidermal appendages but not in dermis. Expressed in all layers of the epidermis except the basal layer. In hair follicles, expressed in the suprabasal layer but not the basal layer. Also expressed in melanoma and carcinoma cell lines, fibroblasts and foreskin melanocytes

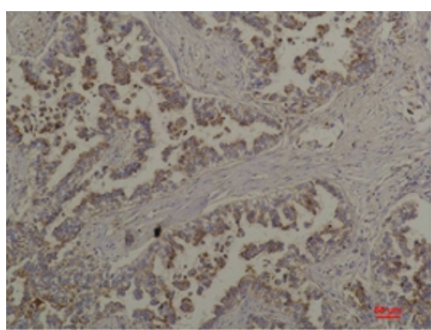
Background

May act as a scaffolding protein within caveolar membranes, functionally participating in formation of caveolae or caveolae-like vesicles. May be involved in epidermal cell adhesion and epidermal structure and function.

Images



Western blot analysis of 1) A431, 2) Mouse Brain Tissue, 3) Rat Brain Tissue with Flotillin-2 Rabbit pAb diluted at 1:2,000.



Immunohistochemical analysis of paraffin-embedded Human Lung Carcinoma using Flotillin-2 Rabbit pAb diluted at 1:200

Please note: All products are 'FOR RESEARCH USE ONLY. NOT FOR USE IN DIAGNOSTIC OR THERAPEUTIC PROCEDURES'.