

Crystallin- α C Polyclonal Antibody

Catalog # AP63593

Product Information

Application	WB
Primary Accession	Q9UJY1
Reactivity	Human
Host	Rabbit
Clonality	Polyclonal
Calculated MW	21604

Additional Information

Gene ID	26353
Other Names	HSPB8; CRYAC; E2IG1; HSP22; PP1629; Heat shock protein beta-8; HspB8; Alpha-crystallin C chain; E2-induced gene 1 protein; Protein kinase H11; Small stress protein-like protein HSP22
Dilution	WB~~WB: 1:500-1000
Format	PBS, pH 7.4, containing 0.09% (W/V) sodium azide as Preservative and 50% Glycerol.
Storage Conditions	-20°C

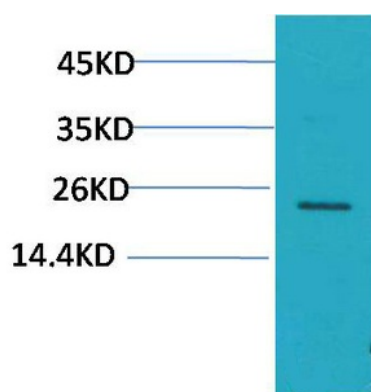
Protein Information

Name	HSPB8
Synonyms	CRYAC, E2IG1, HSP22
Function	Involved in the chaperone-assisted selective autophagy (CASA), a crucial process for protein quality control, particularly in mechanical strained cells and tissues such as muscle. Displays temperature-dependent chaperone activity.
Cellular Location	Cytoplasm. Nucleus Note=Translocates to nuclear foci during heat shock
Tissue Location	Predominantly expressed in skeletal muscle and heart.

Background

Displays temperature-dependent chaperone activity.

Images



Western blot analysis of Hela using Crystallin-αC Polyclonal Antibody.. Secondary antibody was diluted at 1:20000

Please note: All products are 'FOR RESEARCH USE ONLY. NOT FOR USE IN DIAGNOSTIC OR THERAPEUTIC PROCEDURES'.