

# Caspase-8 Monoclonal Antibody(2G12)

Catalog # AP63520

## Product Information

Application	WB, IF, ICC, IHC-P
Primary Accession	<a href="#">Q14790</a>
Reactivity	Human, Mouse, Rat
Host	Mouse
Clonality	Monoclonal
Calculated MW	55391

## Additional Information

Gene ID	841
Other Names	CASP8; MCH5; Caspase-8; CASP-8; Apoptotic cysteine protease; Apoptotic protease Mch-5; CAP4; FADD-homologous ICE/ced-3-like protease; FADD-like ICE; FLICE; ICE-like apoptotic protease 5; MORT1-associated ced-3 homolog; MACH
Dilution	WB~~WB: 1:1000-2000 IHC:1:200-500 IF 1:200 IF~~1:50~200 ICC~~N/A IHC-P~~WB: 1:1000-2000 IHC:1:200-500 IF 1:200
Format	PBS, pH 7.4, containing 0.09% (W/V) sodium azide as Preservative and 50% Glycerol.
Storage Conditions	-20°C

## Protein Information

Name	CASP8 {ECO:0000303 PubMed:9931493, ECO:0000312 HGNC:HGNC:1509}
Function	Thiol protease that plays a key role in programmed cell death by acting as a molecular switch for apoptosis, necroptosis and pyroptosis, and is required to prevent tissue damage during embryonic development and adulthood (PubMed: <a href="#">23516580</a> , PubMed: <a href="#">35338844</a> , PubMed: <a href="#">35446120</a> , PubMed: <a href="#">8681376</a> , PubMed: <a href="#">8681377</a> , PubMed: <a href="#">8962078</a> , PubMed: <a href="#">9006941</a> , PubMed: <a href="#">9184224</a> ). Initiator protease that induces extrinsic apoptosis by mediating cleavage and activation of effector caspases responsible for FAS/CD95-mediated and TNFRSF1A-induced cell death (PubMed: <a href="#">23516580</a> , PubMed: <a href="#">35338844</a> , PubMed: <a href="#">35446120</a> , PubMed: <a href="#">8681376</a> , PubMed: <a href="#">8681377</a> , PubMed: <a href="#">8962078</a> , PubMed: <a href="#">9006941</a> , PubMed: <a href="#">9184224</a> ). Cleaves and activates effector caspases CASP3, CASP4, CASP6, CASP7, CASP9 and CASP10 (PubMed: <a href="#">16916640</a> , PubMed: <a href="#">8962078</a> , PubMed: <a href="#">9006941</a> ). Binding to the adapter molecule FADD recruits it to either receptor FAS/TNFRSF6 or TNFRSF1A (PubMed: <a href="#">8681376</a> , PubMed: <a href="#">8681377</a> ). The resulting aggregate called the death-inducing signaling complex (DISC) performs CASP8

proteolytic activation (PubMed:[9184224](#)). The active dimeric enzyme is then liberated from the DISC and free to activate downstream apoptotic proteases (PubMed:[9184224](#)). Proteolytic fragments of the N-terminal propeptide (termed CAP3, CAP5 and CAP6) are likely retained in the DISC (PubMed:[9184224](#)). Also cleaves and activates BID, thereby promoting cytochrome C release from mitochondria (By similarity). In addition to extrinsic apoptosis, also acts as a negative regulator of necroptosis: acts by cleaving RIPK1 at 'Asp-324', which is crucial to inhibit RIPK1 kinase activity, limiting TNF-induced apoptosis, necroptosis and inflammatory response (PubMed:[31827280](#), PubMed:[31827281](#)). Also able to initiate pyroptosis by mediating cleavage and activation of gasdermin-C and -D (GSDMC and GSDMD, respectively): gasdermin cleavage promotes release of the N-terminal moiety that binds to membranes and forms pores, triggering pyroptosis (PubMed:[32929201](#), PubMed:[34012073](#)). Initiates pyroptosis following inactivation of MAP3K7/TAK1 (By similarity). Also acts as a regulator of innate immunity by mediating cleavage and inactivation of N4BP1 downstream of TLR3 or TLR4, thereby promoting cytokine production (By similarity). May participate in the Granzyme B (GZMB) cell death pathways (PubMed:[8755496](#)). Cleaves PARP1 and PARP2 (PubMed:[8681376](#)). Independent of its protease activity, promotes cell migration following phosphorylation at Tyr-380 (PubMed:[18216014](#), PubMed:[27109099](#)).

#### Cellular Location

Cytoplasm {ECO:0000250|UniProtKB:Q9JHX4}. Nucleus {ECO:0000250|UniProtKB:Q9JHX4}. Cell projection, lamellipodium. Note=Recruitment to lamellipodia of migrating cells is enhanced by phosphorylation at Tyr-380

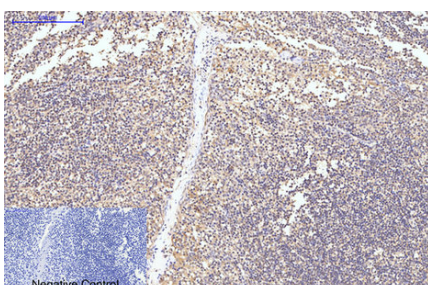
#### Tissue Location

Isoform 1, isoform 5 and isoform 7 are expressed in a wide variety of tissues. Highest expression in peripheral blood leukocytes, spleen, thymus and liver. Barely detectable in brain, testis and skeletal muscle

## Background

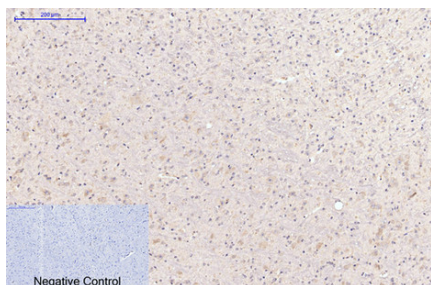
Most upstream protease of the activation cascade of caspases responsible for the TNFRSF6/FAS mediated and TNFRSF1A induced cell death. Binding to the adapter molecule FADD recruits it to either receptor. The resulting aggregate called death-inducing signaling complex (DISC) performs CASP8 proteolytic activation. The active dimeric enzyme is then liberated from the DISC and free to activate downstream apoptotic proteases. Proteolytic fragments of the N-terminal propeptide (termed CAP3, CAP5 and CAP6) are likely retained in the DISC. Cleaves and activates CASP3, CASP4, CASP6, CASP7, CASP9 and CASP10. May participate in the GZMB apoptotic pathways. Cleaves ADPRT. Hydrolyzes the small-molecule substrate, Ac-Asp-Glu-Val-Asp-|-AMC. Likely target for the cowpox virus CRMA death inhibitory protein. Isoform 5, isoform 6, isoform 7 and isoform 8 lack the catalytic site and may interfere with the pro-apoptotic activity of the complex.

## Images

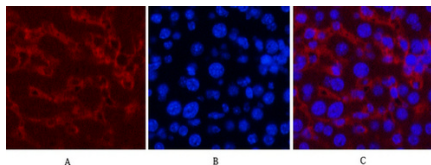


Immunohistochemical analysis of paraffin-embedded Human-Tonsil tissue. 1, Caspase-8 Monoclonal Antibody(2G12) was diluted at 1:200(4°C, overnight). 2, Sodium citrate pH 6.0 was used for antibody retrieval(>98°C, 20min). 3, Secondary antibody was diluted at 1:200(room temperature, 30min). Negative control was used by secondary antibody only.

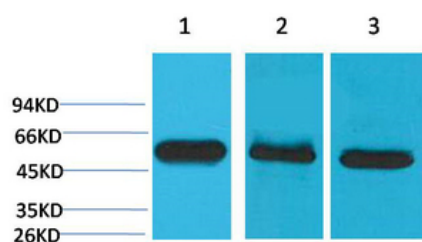
Immunohistochemical analysis of paraffin-embedded



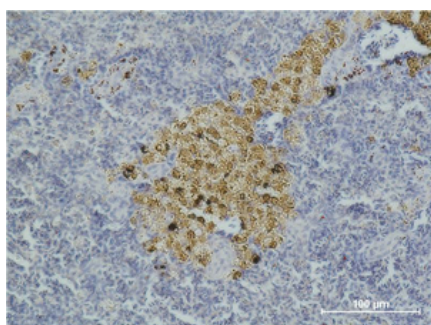
Mouse-brain tissue. 1, Caspase-8 Monoclonal Antibody(2G12) was diluted at 1:200(4°C, overnight). 2, Sodium citrate pH 6.0 was used for antibody retrieval(>98°C, 20min). 3, Secondary antibody was diluted at 1:200(room temperature, 30min). Negative control was used by secondary antibody only.



Immunofluorescence analysis of Mouse-liver tissue. 1, Caspase-8 Monoclonal Antibody(2G12)(red) was diluted at 1:200(4°C, overnight). 2, Cy3 labeled Secondary antibody was diluted at 1:300(room temperature, 50min). 3, Picture B: DAPI(blue) 10min. Picture A: Target. Picture B: DAPI. Picture C: merge of A+B



Western blot analysis of 1) Hela, 2) Mouse Brain Tissue, 3) Rat Brain Tissue using Caspase-8 Monoclonal Antibody.



Immunohistochemical analysis of paraffin-embedded Mouse Spleen Tissue using Caspase-8 Monoclonal Antibody.

Please note: All products are 'FOR RESEARCH USE ONLY. NOT FOR USE IN DIAGNOSTIC OR THERAPEUTIC PROCEDURES'.