

α -SMA Monoclonal Antibody(1E12)

Catalog # AP63509

Product Information

Application	WB, IHC-P
Primary Accession	P62736
Reactivity	Human, Mouse, Rat
Host	Mouse
Clonality	Monoclonal

Additional Information

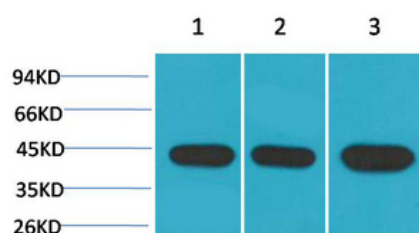
Other Names	ACTA2; ACTSA; ACTVS; GIG46; Actin, aortic smooth muscle; Alpha-actin-2; Cell growth-inhibiting gene 46 protein
Dilution	WB~WB: 1:5000-50000 IHC: 1:1000-2000 IHC-P~WB: 1:5000-50000 IHC: 1:1000-2000
Format	PBS, pH 7.4, containing 0.09% (W/V) sodium azide as Preservative and 50% Glycerol.
Storage Conditions	-20°C

Protein Information

Background

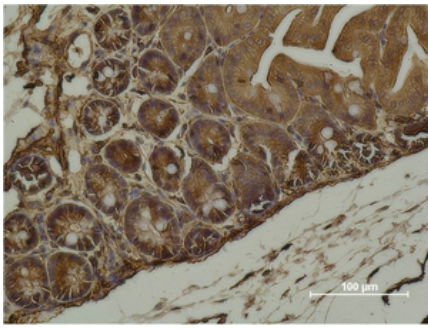
Actins are highly conserved proteins that are involved in various types of cell motility and are ubiquitously expressed in all eukaryotic cells.

Images

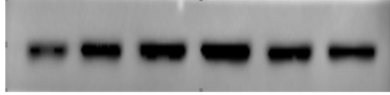


Western blot analysis of 1) Hela, 2) 3T3, 3) Rat Brain using α -SMA Monoclonal Antibody.

Immunohistochemical analysis of paraffin-embedded Mouse Cecal Tissue using α -SMA Monoclonal Antibody.



Pancreatic stellate cel



Wuhan Union Hospital

The picture was kindly provided by our customer

Please note: All products are 'FOR RESEARCH USE ONLY. NOT FOR USE IN DIAGNOSTIC OR THERAPEUTIC PROCEDURES'.