

# PEPC (Phospho Ser15) Polyclonal Antibody

Catalog # AP63492

## Product Information

---

Application	WB
Primary Accession	<a href="#">P20142</a>
Reactivity	Plants
Host	Rabbit
Clonality	Polyclonal
Calculated MW	42426

## Additional Information

---

Gene ID	5225
Other Names	PGC; Gastricsin; Pepsinogen C
Dilution	WB~~WB: 1:1000-2000
Format	PBS, pH 7.4, containing 0.09% (W/V) sodium azide as Preservative and 50% Glycerol.
Storage Conditions	-20°C

## Protein Information

---

Name	PGC
Function	Hydrolyzes a variety of proteins.
Cellular Location	Secreted.

## Background

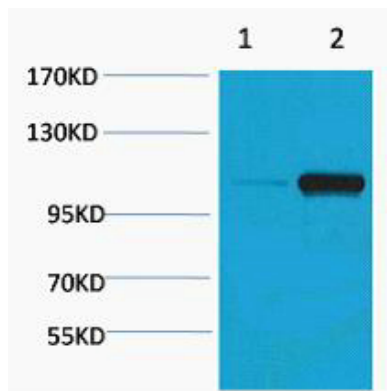
---

Hydrolyzes a variety of proteins.

## Images

---

Western blot analysis of Maize 1) Dark, 2) Light, diluted at 1:2000.. Secondary antibody was diluted at 1:20000



Please note: All products are 'FOR RESEARCH USE ONLY. NOT FOR USE IN DIAGNOSTIC OR THERAPEUTIC PROCEDURES'.